

Anti-MYBPC1 Antibody

Catalog Number: A06339

About MYBPC1

Thick filament-associated protein located in the crossbridge region of vertebrate striated muscle a bands. In vitro it binds MHC, F-actin and native thin filaments, and modifies the activity of actin-activated myosin ATPase. It may modulate muscle contraction or may play a more structural role.

Fuerst D.O., J. Cell Sci. 102:769-778(1992).

Weber F.E., Eur. J. Biochem. 216:661-669(1993).

Bechtel S., BMC Genomics 8:399-399(2007).

Overview

Product Name	Anti-MYBPC1 Antibody
Reactive Species	Human
Description	Boster Bio Anti-MYBPC1 Antibody (Catalog # A06339). Tested in WB applications. This antibody reacts with Human.
Application	WB
Clonality	Polyclonal
Formulation	Rabbit IgG in phosphate buffered saline (without Mg ²⁺ and Ca ²⁺), pH 7.4, 150mM NaCl, 0.02% sodium azide and 50% glycerol.
Storage Instructions	Store at -20°C for one year. For short term storage and frequent use, store at 4°C for up to one month. Avoid repeated freeze-thaw cycles.
Host	Rabbit
Uniprot ID	Q00872

Technical Details

Immunogen	Synthesized peptide derived from internal of human MYBPC1.
Isotype	IgG
Form	Liquid
Concentration	1 mg/ml
Purification	The antibody was affinity-purified from rabbit antiserum by affinity-chromatography using epitope-specific immunogen.
Suggested Dilutions	Dilute the sample so that the expected range of concentrations fall within the detection range of this

kit.

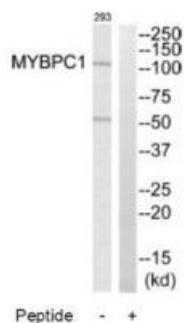
If the expected range of concentration is unknown, a pilot test should be conducted to decide the optimal dilution ratio for your samples.

Some PubMed article(s) citing the expression level of this target are as follows:

Boster Bio's internal QC testing used:

Western blotting: 1:500~1:3000

Anti-MYBPC1 Antibody (A06339) Images



Western blot analysis of extracts from 293 cells, using MYBPC1 antibody A06339.

Submit a product review to Biocompare.com

Submit a review of this product to Biocompare.com to receive a \$20 Amazon.com giftcard! Your reviews help your fellow scientists make the right decisions. Thank you for your contribution.



Anti-MYBPC1 Antibody