

## Anti-PHACTR1 Antibody Picoband®

Catalog Number: A06344-1

### About PHACTR1

Phosphatase and actin regulator 1 (PHACTR1) is a protein that in humans is encoded by the PHACTR1 gene on chromosome 6. The protein encoded by this gene is a member of the phosphatase and actin regulator family of proteins. This family member can bind actin and regulate the reorganization of the actin cytoskeleton. It plays a role in tubule formation and in endothelial cell survival. Polymorphisms in this gene are associated with susceptibility to myocardial infarction, coronary artery disease and cervical artery dissection. Alternative splicing of this gene results in multiple transcript variants.

### Overview

Product Name	Anti-PHACTR1 Antibody Picoband®
Reactive Species	Human, Mouse, Rat
Description	Boster Bio Anti-PHACTR1 Antibody Picoband® catalog # A06344-1. Tested in WB, FCM, ELISA applications. This antibody reacts with Human, Mouse, Rat. The brand Picoband indicates this is a premium antibody that guarantees superior quality, high affinity, and strong signals with minimal background in Western blot applications. Only our best-performing antibodies are designated as Picoband, ensuring unmatched performance.
Application	ELISA, Flow Cytometry, WB
Clonality	Polyclonal
Formulation	Each vial contains 4 mg Trehalose, 0.9 mg NaCl, 0.2 mg Na <sub>2</sub> HPO <sub>4</sub> .
Storage Instructions	At -20°C for one year from date of receipt. After reconstitution, at 4°C for one month. It can also be aliquotted and stored frozen at -20°C for six months. Avoid repeated freezing and thawing.
Host	Rabbit
Uniprot ID	Q9C0D0

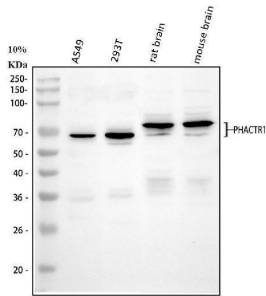
### Technical Details

Immunogen	E.coli-derived human PHACTR1 recombinant protein (Position: K66-E395). Human PHACTR1 shares 94.8% and 95.2% amino acid (aa) sequence identity with mouse and rat PHACTR1, respectively.
Recommended Detection Systems	Boster recommends Enhanced Chemiluminescent Kit with anti-Rabbit IgG (EK1002) for Western blot.
Form	Lyophilized
Concentration	Adding 0.2 ml of distilled water will yield a concentration of 500 ug/ml.
Purification	Immunogen affinity purified.

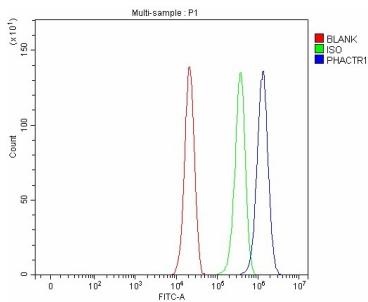
Suggested Dilutions

Western blot, 0.25-0.5 ug/ml, Human, Mouse, Rat  
Flow Cytometry (Fixed), 1-3 ug/ $1 \times 10^6$  cells, Human  
ELISA, 0.1-0.5 ug/ml, -

## Anti-PHACTR1 Antibody Picoband® (A06344-1) Images



Western blot analysis of PHACTR1 using anti-PHACTR1 antibody (A06344-1). Electrophoresis was performed on a 5-20% SDS-PAGE gel at 70V (Stacking gel) / 90V (Resolving gel) for 2-3 hours. The sample well of each lane was loaded with 30 ug of sample under reducing conditions. Lane 1: human A549 whole cell lysates, Lane 2: human 293T whole cell lysates, Lane 3: rat brain tissue lysates, Lane 4: mouse brain tissue lysates. After electrophoresis, proteins were transferred to a nitrocellulose membrane at 150 mA for 50-90 minutes. Blocked the membrane with 5% non-fat milk/TBS for 1.5 hour at RT. The membrane was incubated with rabbit anti-PHACTR1 antigen affinity purified polyclonal antibody (Catalog # A06344-1) at 0.5 ug/mL overnight at 4°C, then washed with TBS-0.1%Tween 3 times with 5 minutes each and probed with a goat anti-rabbit IgG-HRP secondary antibody at a dilution of 1:5000 for 1.5 hour at RT. The signal is developed using an Enhanced Chemiluminescent detection (ECL) kit (Catalog # EK1002) with Tanon 5200 system. A specific band was detected for PHACTR1 at approximately 69 kDa. The expected band size for PHACTR1 is at 66 kDa.



Flow Cytometry analysis of A549 cells using anti-PHACTR1 antibody (A06344-1). Overlay histogram showing A549 cells stained with A06344-1 (Blue line). To facilitate intracellular staining, cells were fixed with 4% paraformaldehyde and permeabilized with permeabilization buffer. The cells were blocked with 10% normal goat serum. And then incubated with rabbit anti-PHACTR1 Antibody (A06344-1, 1 ug/1x10<sup>6</sup> cells) for 30 min at 20°C. DyLight®488 conjugated goat anti-rabbit IgG (BA1127, 5-10 ug/1x10<sup>6</sup> cells) was used as secondary antibody for 30 minutes at 20°C. Isotype control antibody (Green line) was rabbit IgG (1 ug/1x10<sup>6</sup>) used under the same conditions. Unlabelled sample without incubation with primary antibody and secondary antibody (Red line) was used as a blank control.

### Submit a product review to Biocompare.com

Submit a review of this product to Biocompare.com to receive a \$20 Amazon.com giftcard! Your reviews help your fellow scientists make the right decisions. Thank you for your contribution.



### Anti-PHACTR1 Antibody

For Research Use Only. Not for use in diagnostic procedures.