

## Anti-C3AR1/C3Ar Antibody

Catalog Number: A06350

### Overview

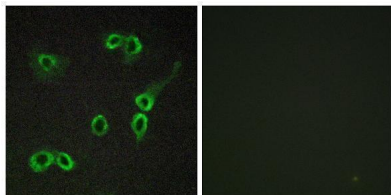
Product Name	Anti-C3AR1/C3Ar Antibody
Reactive Species	Human, Mouse, Rat
Description	Boster Bio Anti-C3AR1/C3Ar Antibody (Catalog# A06350). Tested in IHC, ICC, IF, ELISA applications. This antibody reacts with Human, Mouse, Rat.
Application	ELISA, IF, IHC, ICC
Clonality	Polyclonal
Formulation	PBS containing 50% glycerol, 0.5% stabilizing protein and 0.02% sodium azide. *This antibody is supplied in a stabilized formulation. Compatibility with conjugation reactions depends on the chemistry of the conjugation method used. For conjugation methods that are not compatible with the stabilizing components present in this formulation, a carrier-free antibody format is required.
Storage Instructions	Store at -20°C for one year. For short-term storage and frequent use, store at 4°C for up to one month. Avoid repeated freeze-thaw cycles.
Host	Rabbit
Uniprot ID	Q16581

### Technical Details

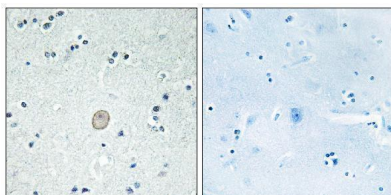
Immunogen	A peptide derived from human C3AR1. Immunogen sequence location: 175 - 224
Isotype	Rabbit IgG
Form	Liquid
Concentration	0.5-1mg/ml, actual concentration vary by lot. Use suggested dilution ratio to decide dilution procedure.
Purification	The antibody was purified from rabbit antiserum by affinity-chromatography using immunogen.
Suggested Dilutions	IHC 1:100 - 1:300. ICC/IF 1:200 - 1:1000. ELISA: 1:10000. Not yet tested in other applications.

## Anti-C3AR1/C3Ar Antibody (A06350) Images

---



Immunofluorescence analysis of COS7 cells, using C3AR1 Antibody. The picture on the right is blocked with the synthesized peptide.



Immunohistochemistry analysis of paraffin-embedded human brain tissue, using C3AR1 Antibody. The picture on the right is blocked with the synthesized peptide.

---

### Submit a product review to [Biocompare.com](https://www.biocompare.com)

Submit a review of this product to [Biocompare.com](https://www.biocompare.com) to receive a \$20 Amazon.com giftcard! Your reviews help your fellow scientists make the right decisions. Thank you for your contribution.



Anti-C3AR1/C3Ar Antibody

For Research Use Only. Not for use in diagnostic procedures.