

Anti-LZTR1 Antibody

Catalog Number: A06363

About LZTR1

LZTR1, a member of the BTB-kelch superfamily, was initially described as a putative transcriptional regulator based on weak homology to members of the basic leucine zipper-like family, the encoded protein subsequently has been shown to localize exclusively to the Golgi network where it may help stabilize the Golgi complex. Deletion of this gene may be associated with DiGeorge syndrome, a developmental field defect involving the third and fourth pharyngeal pouches, causing the absence of thymus and parathyroid glands, congenital cardiac abnormalities and facial dysmorphism. LZTR1 is tyrosine phosphorylated and subsequently degraded upon induction of apoptosis.

Overview

Product Name	Anti-LZTR1 Antibody
Reactive Species	Human, Mouse, Rat
Description	Boster Bio Anti-LZTR1 Antibody (Catalog # A06363). Tested in ELISA, WB, IHC-P applications. This antibody reacts with Human, Mouse, Rat.
Application	ELISA, IHC-P, WB
Clonality	Polyclonal Clone: SK7
Formulation	LZTR1 Antibody is supplied in PBS containing 0.02% sodium azide.
Storage Instructions	LZTR1 antibody can be stored at 4°C for three months and -20°C, stable for up to one year. Avoid repeated freeze-thaw cycles. Antibodies should not be exposed to prolonged high temperatures.
Host	Rabbit
Uniprot ID	Q8N653

Technical Details

Immunogen	LZTR1 antibody was raised against a 14 amino acid synthetic peptide near the amino terminus of human LZTR1. The immunogen is located within amino acids 130 - 180 of LZTR1.
Predicted Reactive Species	Bovine, Chicken
Cross Reactivity	DENR antibody is human, mouse and rat reactive.
Isotype	IgG
Form	Liquid
Concentration	1 mg/mL
Purification	LZTR1 Antibody is affinity chromatography purified via peptide column.

Suggested Dilutions

Dilute the sample so that the expected range of concentrations fall within the detection range of this kit.

If the expected range of concentration is unknown, a pilot test should be conducted to decide the optimal dilution ratio for your samples.

Some PubMed article(s) citing the expression level of this target are as follows:

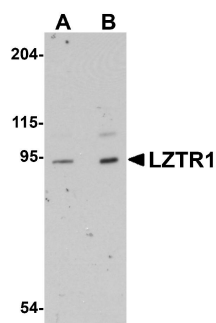
Boster Bio's internal QC testing used:

LZTR1 antibody can be used for detection of LZTR1 by Western blot at 1 - 2 ug/mL. Antibody can also be used for immunohistochemistry starting at 5 ug/mL.

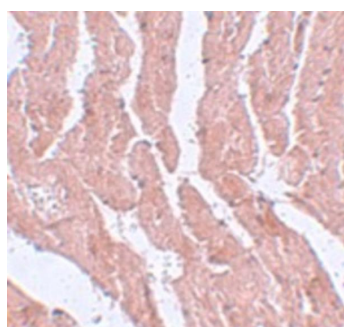
Antibody validated: Western Blot in human samples and Immunohistochemistry in mouse samples.

All other applications and species not yet tested. Optimal dilutions for each application should be determined by the researcher.

Anti-LZTR1 Antibody (A06363) Images



Western blot analysis of LZTR1 in human heart tissue lysate with LZTR1 antibody at (A) 1 and (B) 2 ug/mL.



Immunohistochemistry of LZTR1 in mouse heart tissue with LZTR1 antibody at 5 ug/mL.

Submit a product review to Biocompare.com

Submit a review of this product to Biocompare.com to receive a \$20 Amazon.com giftcard! Your reviews help your fellow scientists make the right decisions. Thank you for your contribution.



Anti-LZTR1 Antibody