

Anti-Spred2 Antibody

Catalog Number: A06368

About SPRED2

Spred2 is a member of the Sprouty family, a group of proteins that act as negative regulators during development. Like Spred1, Spred2 acts by suppressing the phosphorylation and activation of Raf. The Spred proteins have also been implicated in the negative feedback regulation of FGF signaling in embryogenesis and angiogenesis. Further studies have shown that expression levels of Spred1 and Spred2 proteins are inversely correlated with the incidence of tumor invasion and metastasis in human hepatocellular carcinoma (HCC), suggesting that these proteins could be useful as prognostic factors and therapeutic targets in HCC. At least two isoforms of Spred2 are known to exist.

Overview

Product Name	Anti-Spred2 Antibody
Reactive Species	Human
Description	Boster Bio Anti-Spred2 Antibody (Catalog # A06368). Tested in ELISA, WB applications. This antibody reacts with Human.
Application	ELISA, WB
Clonality	Polyclonal
Formulation	Spred2 Antibody is supplied in PBS containing 0.02% sodium azide.
Storage Instructions	Spred2 antibody can be stored at 4°C for three months and -20°C, stable for up to one year. Avoid repeated freeze-thaw cycles. Antibodies should not be exposed to prolonged high temperatures.
Host	Rabbit
Uniprot ID	Q7Z698

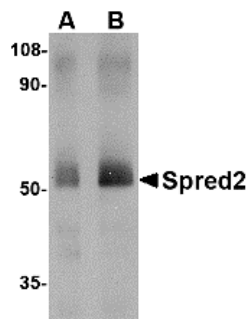
Technical Details

Immunogen	Spred2 antibody was raised against a 13 amino acid synthetic peptide near the center of the human Spred2. The immunogen is located within amino acids 140 - 190 of Spred2.
Predicted Reactive Species	Mouse, Rat
Cross Reactivity	This Spred2 antibody is predicted to have no cross-reactivity to Spred1 or Spred3.
Isotype	IgG
Form	Liquid
Concentration	1 mg/mL
Purification	Spred2 Antibody is affinity chromatography purified via peptide column.

Suggested Dilutions

Spred2 antibody can be used for detection of Spred2 by Western blot at 1 - 2 ug/mL.
Antibody validated: Western Blot in human samples. All other applications and species not yet tested. Optimal dilutions for each application should be determined by the researcher.

Anti-Spred2 Antibody (A06368) Images



Western blot analysis of Spred2 in human small intestine tissue lysate with Spred2 antibody at (A) 1 and (B) 2 ug/mL.

Submit a product review to Biocompare.com

Submit a review of this product to Biocompare.com to receive a \$20 Amazon.com giftcard! Your reviews help your fellow scientists make the right decisions. Thank you for your contribution.



Anti-Spred2 Antibody

For Research Use Only. Not for use in diagnostic procedures.