

Anti-Plexin A1 PLXNA1 Antibody

Catalog Number: A06377

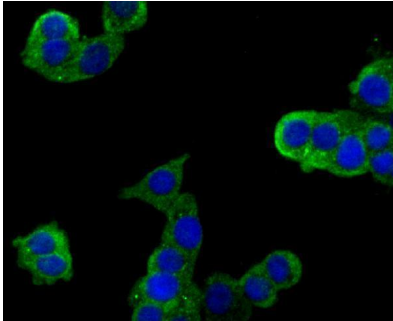
Overview

| | |
|----------------------|--|
| Product Name | Anti-Plexin A1 PLXNA1 Antibody |
| Reactive Species | Human, Mouse, Rat |
| Description | Boster Bio Anti-Plexin A1 PLXNA1 Antibody catalog # A06377. Tested in WB,ICC,Flow Cytometry applications. This antibody reacts with Human,Mouse,Rat. |
| Application | Flow Cytometry, ICC, WB |
| Clonality | Polyclonal |
| Formulation | Rabbit IgG, 1mg/ml in PBS with 0.02% sodium azide, 50% glycerol, pH7.2 |
| Storage Instructions | Store at -20°C for one year. For short term storage and frequent use, store at 4°C for up to one month. Avoid repeated freeze-thaw cycles. |
| Host | Rabbit |
| Uniprot ID | Q9UIW2 |

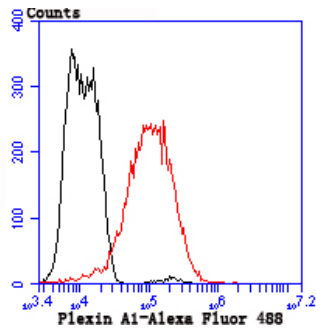
Technical Details

| | |
|---------------------|--|
| Immunogen | Recombinant protein |
| Isotype | IgG |
| Form | Liquid |
| Concentration | 1 mg/ml |
| Purification | ProA affinity purified |
| Suggested Dilutions | WB: 1:500 ICC: 1:50-1:200 FC: 1:50-1:100 |

Anti-Plexin A1 PLXNA1 Antibody (A06377) Images



ICC staining Plexin A1 in LOVO cells (green). The nuclear counter stain is DAPI (blue). Cells were fixed in paraformaldehyde, permeabilised with 0.25% Triton X100/PBS.



Flow cytometric analysis of LOVO cells with Plexin A1 antibody at 1/50 dilution (red) compared with an unlabelled control (cells without incubation with primary antibody; black). Alexa Fluor 488-conjugated goat anti rabbit IgG was used as the secondary antibody.

Submit a product review to Biocompare.com

Submit a review of this product to Biocompare.com to receive a \$20 Amazon.com giftcard! Your reviews help your fellow scientists make the right decisions. Thank you for your contribution.



Anti-Plexin A1 PLXNA1 Antibody

For Research Use Only. Not for use in diagnostic procedures.