

## Anti-SNM1B DCLRE1B Antibody

Catalog Number: A06378

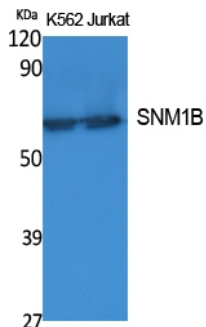
### Overview

Product Name	Anti-SNM1B DCLRE1B Antibody
Reactive Species	Human, Mouse, Rat
Description	Boster Bio Anti-SNM1B DCLRE1B Antibody catalog # A06378. Tested in WB, ELISA, IHC applications. This antibody reacts with Human, Mouse, Rat.
Application	ELISA, IHC, WB
Clonality	Polyclonal
Formulation	Liquid in PBS containing 50% glycerol, 0.5% stabilizing protein and 0.02% sodium azide. *This antibody is supplied in a stabilized formulation. Compatibility with conjugation reactions depends on the chemistry of the conjugation method used. For conjugation methods that are not compatible with the stabilizing components present in this formulation, a carrier-free antibody format is required.
Storage Instructions	Store at -20°C for one year. For short term storage and frequent use, store at 4°C for up to one month. Avoid repeated freeze-thaw cycles.
Host	Rabbit
Uniprot ID	Q9H816

### Technical Details

Immunogen	Synthesized peptide derived from the C-terminal region of human SNM1B.
Isotype	IgG
Form	Liquid
Concentration	1 mg/ml
Purification	Immunogen affinity purified
Suggested Dilutions	WB 1:500-2000 IHC 1:50-300 ELISA 1:2000-20000

## Anti-SNM1B DCLRE1B Antibody (A06378) Images



Western Blot (WB) analysis of extracts from K562, Jurkat cells, using SNM1B Polyclonal antibody.

### Submit a product review to Biocompare.com

Submit a review of this product to Biocompare.com to receive a \$20 Amazon.com giftcard! Your reviews help your fellow scientists make the right decisions. Thank you for your contribution.



Anti-SNM1B DCLRE1B Antibody

For Research Use Only. Not for use in diagnostic procedures.