

Anti-CISD2 Antibody

Catalog Number: A06387

About CISD2

Defects in the CISD2 (CDGSH iron sulfur domain 2) gene are a cause of the neurodegenerative disorder Wolfram syndrome 2. CISD2 is a zinc finger protein that localizes to the endoplasmic reticulum and mitochondria and binds an iron/sulfur cluster. CISD2 interacts with Bcl-2 and can be displaced by the BH3-only protein BIK and contributes to the regulation of BIK-initiated autophagy. CISD2 deficiency in mice causes mitochondrial breakdown accompanied by autophagic cell death as well as the development of premature aging phenotype.

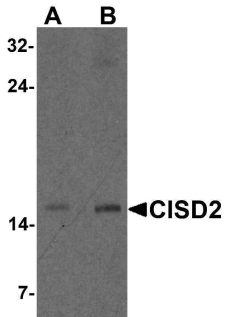
Overview

Product Name	Anti-CISD2 Antibody
Reactive Species	Human, Mouse, Rat
Description	Boster Bio Anti-CISD2 Antibody (Catalog # A06387). Tested in ELISA, WB, IHC-P, IF applications. This antibody reacts with Human, Mouse, Rat.
Application	ELISA, IF, IHC-P, WB
Clonality	Polyclonal
Formulation	CISD2 Antibody is supplied in PBS containing 0.02% sodium azide.
Storage Instructions	CISD2 antibody can be stored at 4°C for three months and -20°C, stable for up to one year.
Host	Rabbit
Uniprot ID	Q8N5K1

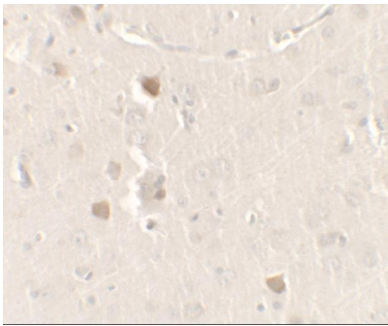
Technical Details

Immunogen	CISD2 antibody was raised against a 15 amino acid peptide near the center of human CISD2. The immunogen is located within amino acids 40 - 90 of CISD2.
Predicted Reactive Species	Bovine
Isotype	IgG
Form	Liquid
Concentration	1 mg/mL
Purification	CISD2 Antibody is affinity chromatography purified via peptide column.
Suggested Dilutions	CISD2 antibody was raised against a 15 amino acid peptide near the center of human CISD2. Antibody validated: Western Blot in rat samples; Immunohistochemistry in rat samples and Immunofluorescence in rat samples. All other applications and species not yet tested. Optimal dilutions for each application should be determined by the researcher.

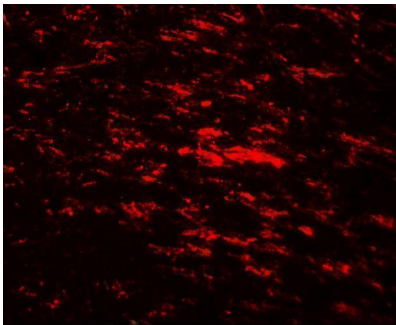
Anti-CISD2 Antibody (A06387) Images



Western blot analysis of CISD2 in rat brain tissue lysate with CISD2 antibody at (A) 1 and (B) 2 ug/m



Immunohistochemistry of CISD2 in rat brain tissue with CISD2 antibody at 2.5 ug/ml.



Immunofluorescence of CISD2 in rat brain tissue with CISD2 antibody at 20 ug/ml.

Submit a product review to [Biocompare.com](https://www.biocompare.com)

Submit a review of this product to [Biocompare.com](https://www.biocompare.com) to receive a \$20 Amazon.com giftcard! Your reviews help your fellow scientists make the right decisions. Thank you for your contribution.



Anti-CISD2 Antibody

For Research Use Only. Not for use in diagnostic procedures.