

## Anti-NUP155 Antibody

Catalog Number: A06391

### About NUP155

The nuclear pore complex (NPC) is a protein assembly localized at the nuclear rim and mediates macromolecular transport between the nucleus and the cytoplasm. One protein in this assembly is the nucleoporin (NUP)-155, which is localized symmetrically to both the nucleoplasmic and cytoplasmic faces of the NPC. NUP155 has been reported to interact with both NUP35 and the mRNA export factor Gle1, but the functions of these interactions are still unknown. NUP155 has also been shown to be required for NPC assembly and nuclear envelope (NE) membrane fusion. NUP155 is recruited late in NE formation, suggesting that NUP155 defines an essential late step in NE assembly. NUP155 has recently been identified as an HIV dependency factor (HDF), suggesting that NUP155 may be an important drug target in HIV treatment. At least two isoforms of NUP155 are known to exist.

### Overview

Product Name	Anti-NUP155 Antibody
Reactive Species	Human, Mouse
Description	Boster Bio Anti-NUP155 Antibody (Catalog # A06391). Tested in ELISA, WB applications. This antibody reacts with Human, Mouse.
Application	ELISA, WB
Clonality	Polyclonal
Formulation	NUP155 Antibody is supplied in PBS containing 0.02% sodium azide.
Storage Instructions	NUP155 antibody can be stored at 4°C for three months and -20°C, stable for up to one year. Avoid repeated freeze-thaw cycles. Antibodies should not be exposed to prolonged high temperatures.
Host	Rabbit
Uniprot ID	O75694

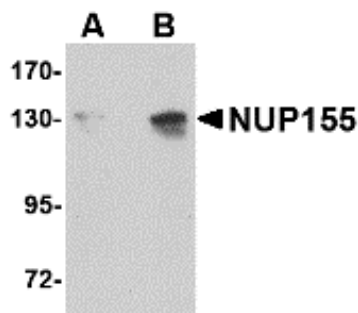
### Technical Details

Immunogen	NUP155 antibody was raised against a 18 amino acid synthetic peptide from near the carboxy terminus of human NUP155. The immunogen is located within the last 50 amino acids of NUP155.
Predicted Reactive Species	Rat
Isotype	IgG
Form	Liquid
Concentration	1 mg/mL
Purification	NUP155 Antibody is affinity chromatography purified via peptide column.

Suggested Dilutions

NUP155 antibody can be used for detection of NUP155 by Western blot at 0.5 - 1 ug/mL.  
Antibody validated: Western Blot in mouse samples. All other applications and species not yet tested. Optimal dilutions for each application should be determined by the researcher.

## Anti-NUP155 Antibody (A06391) Images



Western blot analysis of NUP155 in P815 cell lysate with NUP155 antibody at (A) 0.5 and (B) 1 ug/mL.

### Submit a product review to Biocompare.com

Submit a review of this product to Biocompare.com to receive a \$20 Amazon.com giftcard! Your reviews help your fellow scientists make the right decisions. Thank you for your contribution.



### Anti-NUP155 Antibody

For Research Use Only. Not for use in diagnostic procedures.