

Anti-USP30 Antibody

Catalog Number: A06403-3

About USP30

USP30, a mitochondrion-localized deubiquitylase, regulates mitophagy. Mitochondrial damage stimulates parkin to assemble Lys 6, Lys 11 and Lys 63 chains on mitochondria, and that USP30 is a ubiquitin-specific deubiquitylase with a strong preference for cleaving Lys 6- and Lys 11-linked multimers. USP30 can be ubiquitinated by parkin (PARK2) at Lys-235 and Lys-289. USP30 inhibition is potentially beneficial for treating Parkinson disease by promoting mitochondrial clearance and quality control. USP30 was detected 67 kDa by ubiquitination (PMID: 34704599).

Overview

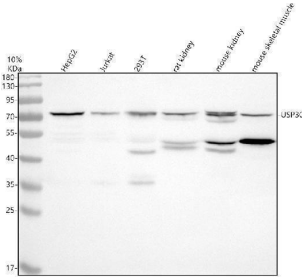
Product Name	Anti-USP30 Antibody
Reactive Species	Human, Mouse, Rat
Description	Boster Bio Anti-USP30 Antibody catalog # A06403-3. Tested in WB, IHC, ICC, IF, ELISA applications. This antibody reacts with Human, Mouse, Rat.
Application	ELISA, IF, IHC, ICC, WB
Clonality	Polyclonal
Formulation	500 ug/ml antibody with PBS, 0.02% NaN ₃ , 1 mg stabilizing protein and 50% glycerol *This antibody is supplied in a stabilized formulation. Compatibility with conjugation reactions depends on the chemistry of the conjugation method used. For conjugation methods that are not compatible with the stabilizing components present in this formulation, a carrier-free antibody format is required.
Storage Instructions	12 months from date of receipt at -20°C as supplied. 6 months 2 to 8°C after reconstitution. Avoid repeated freezing and thawing.
Host	Rabbit
Uniprot ID	Q70CQ3

Technical Details

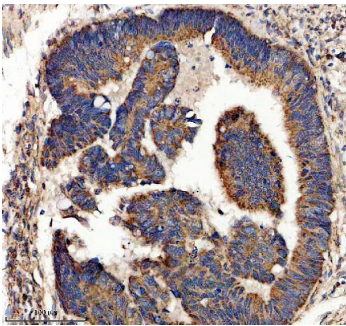
Immunogen	E.coli-derived human USP30 recombinant protein (Position: T161-S506).
Form	Liquid
Concentration	500 ug/ml
Purification	Immunogen affinity purified.
Suggested Dilutions	Western blot, 1:500-2000 Immunohistochemistry, 1:50-400 Immunocytochemistry/Immunofluorescence, 1:50-400 ELISA, 1:100-1000



Anti-USP30 Antibody (A06403-3) Images



Western blot analysis of USP30 using anti-USP30 antibody (A06403-3). Electrophoresis was performed on a 10% SDS-PAGE gel at 80V (Stacking gel) / 120V (Resolving gel) for 2 hours. The sample well of each lane was loaded with 30 ug of sample under reducing conditions. Lane 1: human HepG2 whole cell lysates, Lane 2: human Jurkat whole cell lysates, Lane 3: human 293T whole cell lysates, Lane 4: rat kidney tissue lysates, Lane 5: mouse kidney tissue lysates, Lane 6: mouse small intestine tissue lysates. After electrophoresis, proteins were transferred to a nitrocellulose membrane at 150 mA for 50-90 minutes. Blocked the membrane with 5% non-fat milk/TBS for 1.5 hour at RT. The membrane was incubated with rabbit anti-USP30 antigen affinity purified polyclonal antibody (A06403-3) at 1:1000 overnight at 4°C, then washed with TBS-0.1% Tween 3 times with 5 minutes each and probed with a goat anti-rabbit IgG-HRP secondary antibody at a dilution of 1:5000 for 1.5 hour at RT. The signal is developed using an ECL Plus Western Blotting Substrate (Catalog # AR1196-200) with Tanon 5200 system. A specific band was detected for USP30 at approximately 72 kDa. The expected band size for USP30 is at 59 kDa.



IHC analysis of USP30 using anti-USP30 antibody (A06403-3). USP30 was detected in a paraffin-embedded section of human colon cancer tissue. Heat mediated antigen retrieval was performed in EDTA buffer (pH 8.0, epitope retrieval solution). The tissue section was blocked with 10% goat serum. The tissue section was then incubated with 1:200 rabbit anti-USP30 Antibody (A06403-3) overnight at 4°C. Peroxidase Conjugated Goat Anti-rabbit IgG was used as secondary antibody and incubated for 30 minutes at 37°C. The tissue section was developed using HRP Conjugated Rabbit IgG Super Vision Assay Kit (Catalog # SV0002) with DAB as the chromogen.

Submit a product review to [Biocompare.com](https://www.biocompare.com)

Submit a review of this product to [Biocompare.com](https://www.biocompare.com) to receive a \$20 Amazon.com giftcard! Your reviews help your fellow scientists make the right decisions. Thank you for your contribution.



Anti-USP30 Antibody

For Research Use Only. Not for use in diagnostic procedures.