

Anti-ATP8/MT-ATP8 Antibody

Catalog Number: A06405-1

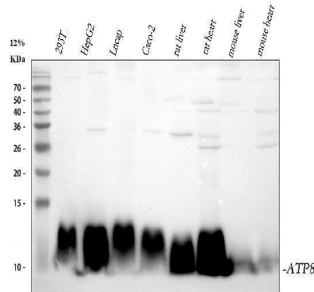
Overview

Product Name	Anti-ATP8/MT-ATP8 Antibody
Reactive Species	Human, Mouse, Rat
Description	Boster Bio Anti-ATP8/MT-ATP8 Antibody catalog # A06405-1. Tested in WB, ICC, IF applications. This antibody reacts with Human, Mouse, Rat.
Application	IF, ICC, WB
Clonality	Polyclonal
Formulation	500 ug/ml antibody with PBS, 0.02% NaN ₃ , 1 mg stabilizing protein and 50% glycerol *This antibody is supplied in a stabilized formulation. Compatibility with conjugation reactions depends on the chemistry of the conjugation method used. For conjugation methods that are not compatible with the stabilizing components present in this formulation, a carrier-free antibody format is required.
Storage Instructions	12 months from date of receipt at -20°C as supplied. 6 months at 2 to 8°C after reconstitution. Avoid repeated freezing and thawing.
Host	Rabbit
Uniprot ID	P03928

Technical Details

Immunogen	Peptide
Form	Liquid
Concentration	500 ug/ml
Purification	Immunogen affinity purified.
Suggested Dilutions	Western blot, 1:500-2000 Immunocytochemistry/Immunofluorescence, 1:50-400

Anti-ATP8/MT-ATP8 Antibody (A06405-1) Images



Western blot analysis of ATP8/MT-ATP8 using anti-ATP8/MT-ATP8 antibody (A06405-1). Electrophoresis was performed on a 8% SDS-PAGE gel at 80V (Stacking gel) / 120V (Resolving gel) for 2 hours. The sample well of each lane was loaded with 30 ug of sample under reducing conditions. Lane 1: human 293T whole cell lysates, Lane 2: human HepG2 whole cell lysates, Lane 3: human Lncap whole cell lysates, Lane 4: human Caco-2 whole cell lysates, Lane 5: rat liver tissue lysates, Lane 6: rat heart tissue lysates, Lane 7: mouse liver tissue lysates, Lane 8: mouse heart tissue lysates. After electrophoresis, proteins were transferred to a nitrocellulose membrane at 150 mA for 50-90 minutes. Blocked the membrane with 5% non-fat milk/TBS for 1.5 hour at RT. The membrane was incubated with rabbit anti-ATP8/MT-ATP8 antigen affinity purified polyclonal antibody (A06405-1) at 1:1000 overnight at 4°C, then washed with TBS-0.1%Tween 3 times with 5 minutes each and probed with a goat anti-rabbit IgG-HRP secondary antibody at a dilution of 1:5000 for 1.5 hour at RT. The signal is developed using an ECL Plus Western Blotting Substrate (Catalog # AR1196-200) with Tanon 5200 system. A specific band was detected for ATP8/MT-ATP8 at approximately 12 kDa. The expected band size for ATP8/MT-ATP8 is at 8 kDa.

Submit a product review to [Biocompare.com](https://www.biocompare.com)

Submit a review of this product to [Biocompare.com](https://www.biocompare.com) to receive a \$20 Amazon.com giftcard! Your reviews help your fellow scientists make the right decisions. Thank you for your contribution.



Anti-ATP8/MT-ATP8 Antibody

For Research Use Only. Not for use in diagnostic procedures.