

## Anti-LZTR2 SEC16B Antibody

Catalog Number: A06452

### About SEC16B

LZTR2, also known as RGPR-p117, is a member of the BTB-kelch superfamily and was initially described as a nuclear factor I (NFI) binding protein and transcriptional regulator of the regucalcin gene. LZTR2 is cytoplasmically localized but is thought to translocate to the nucleus, a process mediated by protein kinase C signaling following hormonal stimulation. Recent evidence has suggested that there is a strong correlation of single nucleotide polymorphisms of LZTR2 with obesity in the Japanese population similar to that seen with the TMEM18 gene and the GNPDA2, BDNF, FAIM2, and MC4R genes with obesity in Caucasian populations, suggesting LZTR2 may play a role in metabolism and obesity risk.

### Overview

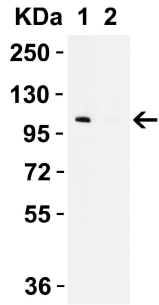
|                      |  |
|----------------------|--|
| Product Name         | Anti-LZTR2 SEC16B Antibody   |
| Reactive Species     | Human, Mouse, Rat  |
| Description          | Boster Bio Anti-LZTR2 SEC16B Antibody (Catalog # A06452). Tested in ELISA, WB, IHC-P, IF applications. This antibody reacts with Human, Mouse, Rat.  |
| Application          | ELISA, IF, IHC-P, WB   |
| Clonality            | Polyclonal   |
| Formulation          | LZTR2 Antibody is supplied in PBS containing 0.02% sodium azide.   |
| Storage Instructions | LZTR2 antibody can be stored at 4°C for three months and -20°C, stable for up to one year. Avoid repeated freeze-thaw cycles. Antibodies should not be exposed to prolonged high temperatures. |
| Host                 | Rabbit   |
| Uniprot ID           | Q96JE7   |

### Technical Details

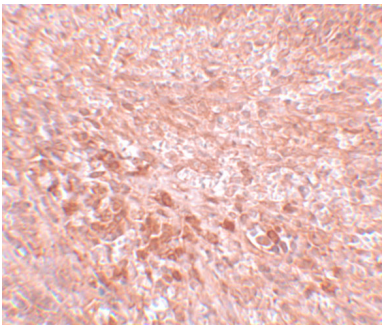
|                            |   |
|----------------------------|---|
| Immunogen                  | LZTR2 antibody was raised against an 18 amino acid synthetic peptide near the carboxy terminus of human LZTR2. The immunogen is located within the last 50 amino acids of LZTR2.                  |
| Predicted Reactive Species | Bovine, Rabbit  |
| Isotype                    | IgG   |
| Form                       | Liquid  |
| Concentration              | 1 mg/mL   |
| Purification               | LZTR2 Antibody is affinity chromatography purified via peptide column.  |
| Suggested Dilutions        | LZTR2 antibody can be used for detection of LZTR2 by Western blot at 0.5 ug/mL. Antibody can also be used for immunohistochemistry starting at 5 ug/mL. For immunofluorescence start at 20 ug/mL. |

Antibody validated: Western Blot in human samples; Immunohistochemistry in mouse samples and Immunofluorescence in mouse samples. All other applications and species not yet tested. Optimal dilutions for each application should be determined by the researcher.

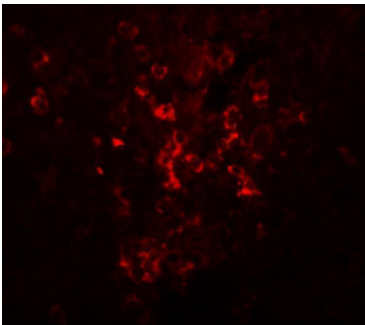
## Anti-LZTR2 SEC16B Antibody (A06452) Images



WB Validation in 293 Cells Loading: 10 ug of cell lysate  
Antibodies: LZTR2 A06452-1001, 0.5 ug/ml, 1 h incubation  
at RT in 5% NFDM/TBST. Secondary: Goat Anti-Rabbit IgG  
HRP conjugate at 1:10000 dilution. Exposure: 10 sec Lane 1:  
In the absence of peptide blocking Lane 2: In the presence  
of peptide blocking



Immunohistochemistry of LZTR2 in mouse kidney tissue with  
LZTR2 antibody at 5 ug/mL.



Immunofluorescence of LZTR2 in mouse kidney tissue with  
LZTR2 antibody at 20 ug/mL.

### Submit a product review to [Biocompare.com](https://www.biocompare.com)

Submit a review of this product to [Biocompare.com](https://www.biocompare.com) to receive a \$20 Amazon.com giftcard! Your reviews help your fellow scientists make the right decisions. Thank you for your contribution.



Anti-LZTR2 SEC16B Antibody

For Research Use Only. Not for use in diagnostic procedures.