

Anti-A Cyclase I ADCY1 Antibody

Catalog Number: A06460

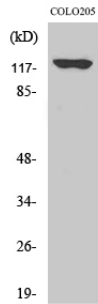
Overview

Product Name	Anti-A Cyclase I ADCY1 Antibody
Reactive Species	Human, Mouse
Description	Boster Bio Anti-A Cyclase I ADCY1 Antibody catalog # A06460. Tested in WB, IHC, IF, ELISA applications. This antibody reacts with Human, Mouse.
Application	ELISA, IF, IHC, WB
Clonality	Polyclonal
Formulation	Liquid in PBS containing 50% glycerol, 0.5% stabilizing protein and 0.02% sodium azide. *This antibody is supplied in a stabilized formulation. Compatibility with conjugation reactions depends on the chemistry of the conjugation method used. For conjugation methods that are not compatible with the stabilizing components present in this formulation, a carrier-free antibody format is required.
Storage Instructions	Store at -20°C for one year. For short term storage and frequent use, store at 4°C for up to one month. Avoid repeated freeze-thaw cycles.
Host	Rabbit
Uniprot ID	Q08828

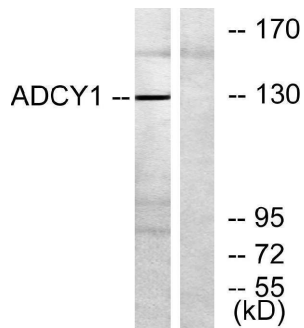
Technical Details

Immunogen	The antiserum was produced against synthesized peptide derived from human ADCY1. AA range:231-280
Isotype	IgG
Form	Liquid
Concentration	1 mg/ml
Purification	The antibody was affinity-purified from rabbit antiserum by affinity-chromatography using a epitope-specific immunogen.
Suggested Dilutions	WB 1:500-1:2000 IHC 1:100-1:300 ELISA 1:40000 IF 1:50-200

Anti-A Cyclase I ADCY1 Antibody (A06460) Images



Western Blot analysis of COLO205 cells using A Cyclase I Polyclonal Antibody



Western blot analysis of lysates from COLO205 cells, using ADCY1 Antibody. The lane on the right is blocked with the synthesized peptide.

Submit a product review to Biocompare.com

Submit a review of this product to Biocompare.com to receive a \$20 Amazon.com giftcard! Your reviews help your fellow scientists make the right decisions. Thank you for your contribution.



Anti-A Cyclase I ADCY1 Antibody

For Research Use Only. Not for use in diagnostic procedures.