

Anti-Matrilin-2 MATN2 Antibody

Catalog Number: A06462

About MATN2

Matrilin (MATNs) are a family of non-collagenous extracellular matrix proteins consisting of four known members that have been proposed to play key roles in the formation of both collagen-dependent and collagen-independent filamentous networks. The matrilin family all share a structure made up of von Willebrand factor A domains, epidermal growth factor-like domains and a coiled coil alpha-helical module. MATN1 and MATN3 are expressed mainly in cartilage, while MATN2 and MATN4 occur in a wide variety of extracellular matrices. The matrilin genes are strictly and differently regulated and their expression may serve as markers for cellular differentiation and diseases such as astrocytoma and liver carcinoma. Recent studies show that MATN2 is a permissive substrate for axonal growth and cell migration, and it is required for successful nerve regeneration.

Overview

Product Name	Anti-Matrilin-2 MATN2 Antibody
Reactive Species	Human, Mouse, Rat
Description	Boster Bio Anti-Matrilin-2 MATN2 Antibody (Catalog # A06462). Tested in ELISA, WB applications. This antibody reacts with Human, Mouse, Rat.
Application	ELISA, WB
Clonality	Polyclonal
Formulation	MATN2 Antibody is supplied in PBS containing 0.02% sodium azide.
Storage Instructions	MATN2 antibody can be stored at 4°C for three months and -20°C, stable for up to one year. Avoid repeated freeze-thaw cycles. Antibodies should not be exposed to prolonged high temperatures.
Host	Rabbit
Uniprot ID	O00339

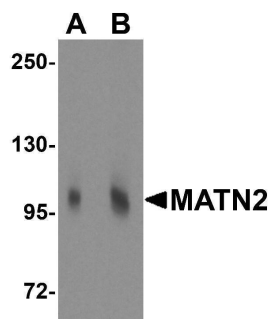
Technical Details

Immunogen	MATN2 antibody was raised against a 15 amino acid synthetic peptide from near the carboxy terminus of human MATN2. The immunogen is located within amino acids 820 - 870 of MATN2.
Predicted Reactive Species	Bovine, Rabbit
Isotype	IgG
Form	Liquid
Concentration	1 mg/mL
Purification	MATN2 Antibody is affinity chromatography purified via peptide column.

Suggested Dilutions

MATN2 antibody can be used for detection of MATN2 by Western blot at 1 - 2 ug/mL.
Antibody validated: Western Blot in mouse samples. All other applications and species not yet tested. Optimal dilutions for each application should be determined by the researcher.

Anti-Matrilin-2 MATN2 Antibody (A06462) Images



Western blot analysis of MATN2 in 3T3 cell lysate with MATN2 antibody at (A) 1 and (B) 2 ug/mL.

Submit a product review to Biocompare.com

Submit a review of this product to Biocompare.com to receive a \$20 Amazon.com giftcard! Your reviews help your fellow scientists make the right decisions. Thank you for your contribution.



Anti-Matrilin-2 MATN2 Antibody

For Research Use Only. Not for use in diagnostic procedures.