

Anti-IQSEC1 Antibody

Catalog Number: A06482

About IQSEC1

ADP ribosylation factors (Arfs) are small GTP-binding proteins known for their role in vesicular transport, where they nucleate the assembly of coat protein complexes at sites of carrier vesicle formation. IQSEC1 (GEP100/BRAG2), a guanine nucleotide exchange protein for ARF6, belongs to the BRAG family and contains one IQ domain, one PH domain and one SEC7 domain (1). As a known activator of ARF6, IQSEC1 regulates cell surface levels of Beta1 integrin and its knockdown blocked tumour metastasis (2,3). IQSEC1 links EGFR signaling to ARF6 activation and may contribute to the cancer metastasis and malignancy (4).

Overview

Product Name	Anti-IQSEC1 Antibody
Reactive Species	Human, Mouse, Rat
Description	Boster Bio Anti-IQSEC1 Antibody (Catalog # A06482). Tested in ELISA, WB, ICC, IF applications. This antibody reacts with Human, Mouse, Rat.
Application	ELISA, IF, ICC, WB
Clonality	Polyclonal
Formulation	IQSEC1 antibody is supplied in PBS containing 0.02% sodium azide.
Storage Instructions	IQSEC1 antibody can be stored at 4°C for three months and -20°C, stable for up to one year.
Host	Rabbit
Uniprot ID	Q6DN90

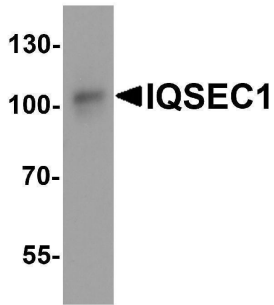
Technical Details

Immunogen	IQSEC1 antibody was raised against a 19 amino acid peptide near the amino terminus of human IQSEC1. The immunogen is located within amino acids 60 - 110 of IQSEC1.
Predicted Reactive Species	Bovine, Rabbit
Cross Reactivity	IQSEC1 antibody is human, mouse and rat reactive. At least four isoforms of IQSEC1 are known to exist. IQSEC1 antibody is predicted to not cross-react with IQSEC2.
Isotype	IgG
Form	Liquid
Concentration	1 mg/mL
Purification	IQSEC1 antibody is affinity chromatography purified via peptide column.

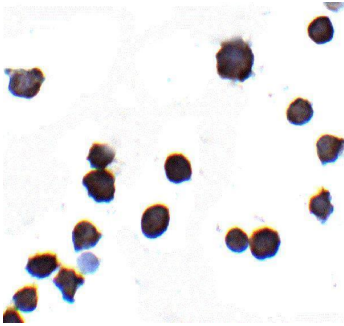
Suggested Dilutions

IQSEC1 antibody can be used for detection of IQSEC1 by Western blot at 1 - 2 ug/ml. Antibody can also be used for immunocytochemistry at 2 ug/mL. For immunofluorescence start at 2 ug/mL. Antibody validated: Western Blot in mouse samples; Immunocytochemistry in mouse samples and Immunofluorescence in mouse samples. All other applications and species not yet tested. Optimal dilutions for each application should be determined by the researcher.

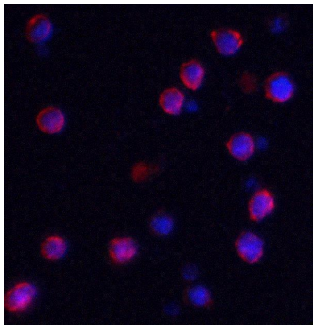
Anti-IQSEC1 Antibody (A06482) Images



Western blot analysis of IQSEC1 in A20 cell lysate with IQSEC1 antibody at 1 ug/ml.



Immunocytochemistry of IQSEC1 in A-20 cells with IQSEC1 antibody at 2 ug/mL.



Immunofluorescence of IQSEC1 in A-20 cells with IQSEC1 antibody at 2 ug/mL. Red: IQSEC1 Antibody (A06482) Blue: DAPI staining

Submit a product review to [Biocompare.com](https://www.biocompare.com)

Submit a review of this product to [Biocompare.com](https://www.biocompare.com) to receive a \$20 Amazon.com giftcard! Your reviews help your fellow scientists make the right decisions. Thank you for your contribution.



Anti-IQSEC1 Antibody

For Research Use Only. Not for use in diagnostic procedures.