

## Anti-WIPI2 Antibody

Catalog Number: A06492

### About WIPI2

WD repeat proteins play a role in many essential biologic functions, regulating the assembly of multiprotein complexes by presenting a beta-propeller platform for simultaneous and reversible protein-protein interactions. WIPI2, also known as ATG18B or ATG21, is a human homolog to yeast ATG18 and contains three WD repeats and has a 7-bladed propeller structure with a conserved motif that facilitates its interaction with other proteins. It is recruited to early autophagosomal structures along with Atg16L and ULK1 and is required for the formation of LC3-positive autophagosomes. Along with the highly related WIPI1, WIPI2 is found at the plasma membrane in addition to autophagosomal membranes.

### Overview

Product Name	Anti-WIPI2 Antibody
Reactive Species	Human, Rat
Description	Boster Bio Anti-WIPI2 Antibody (Catalog # A06492). Tested in ELISA, WB applications. This antibody reacts with Human, Rat.
Application	ELISA, WB
Clonality	Polyclonal
Formulation	WIPI2 Antibody is supplied in PBS containing 0.02% sodium azide.
Storage Instructions	WIPI2 antibody can be stored at 4°C for three months and -20°C, stable for up to one year. Avoid repeated freeze-thaw cycles. Antibodies should not be exposed to prolonged high temperatures.
Host	Rabbit
Uniprot ID	Q9Y4P8

### Technical Details

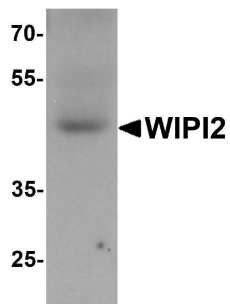
Immunogen	Rabbit polyclonal WIPI2 antibody was raised against a 17 amino acid peptide near the amino terminus of human WIPI2. The immunogen is located within the first 50 amino acids of WIPI2.
Predicted Reactive Species	Bovine, Rabbit
Cross Reactivity	WIPI2 antibody is human and rat reactive. Multiple isoforms of WIPI2 are known to exist. WIPI2 antibody is predicted to not cross-react with WIPI1.
Isotype	IgG
Form	Liquid
Concentration	1 mg/mL
Purification	WIPI2 Antibody is affinity chromatography purified via peptide column.

Suggested Dilutions

WIPI2 antibody can be used for detection of WIPI2 by Western blot at 1 - 2 ug/mL.  
Antibody validated: Western Blot in human samples. All other applications and species not yet tested. Optimal dilutions for each application should be determined by the researcher.

## Anti-WIPI2 Antibody (A06492) Images

---



Western blot analysis of WIPI2 in human testis tissue lysate with WIPI2 antibody at 1 ug/mL

---

### Submit a product review to Biocompare.com

Submit a review of this product to Biocompare.com to receive a \$20 Amazon.com giftcard! Your reviews help your fellow scientists make the right decisions. Thank you for your contribution.



### Anti-WIPI2 Antibody

For Research Use Only. Not for use in diagnostic procedures.