

Anti-GTSE1 Antibody Picoband®

Catalog Number: A06497-3

About GTSE1

The protein encoded by this gene is only expressed in the S and G2 phases of the cell cycle, where it colocalizes with cytoplasmic tubulin and microtubules. In response to DNA damage, the encoded protein accumulates in the nucleus and binds the tumor suppressor protein p53, shuttling it out of the nucleus and repressing its ability to induce apoptosis.

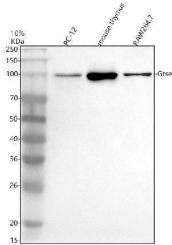
Overview

| | |
|----------------------|--|
| Product Name | Anti-GTSE1 Antibody Picoband® |
| Reactive Species | Mouse, Rat |
| Description | Boster Bio Anti-GTSE1 Antibody Picoband® catalog # A06497-3. Tested in WB, Flow Cytometry, ELISA applications. This antibody reacts with Mouse, Rat. The brand Picoband indicates this is a premium antibody that guarantees superior quality, high affinity, and strong signals with minimal background in Western blot applications. Only our best-performing antibodies are designated as Picoband, ensuring unmatched performance. |
| Application | ELISA, Flow Cytometry, WB |
| Clonality | Polyclonal |
| Formulation | Each vial contains 4 mg Trehalose, 0.9 mg NaCl, 0.2 mg Na ₂ HPO ₄ . |
| Storage Instructions | At -20°C for one year from date of receipt. After reconstitution, at 4°C for one month. It can also be aliquotted and stored frozen at -20°C for six months. Avoid repeated freezing and thawing. |
| Host | Rabbit |
| Uniprot ID | Q9NYZ3 |

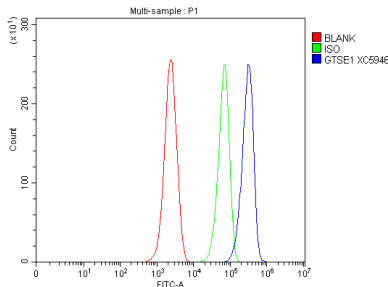
Technical Details

| | |
|---------------------|--|
| Immunogen | E.coli-derived mouse GTSE1 recombinant protein (Position: E49-F739). Mouse GTSE1 shares 100% amino acid (aa) sequence identity with human GTSE1. |
| Form | Lyophilized |
| Concentration | Adding 0.2 ml of distilled water will yield a concentration of 500 ug/ml. |
| Purification | Immunogen affinity purified. |
| Suggested Dilutions | Western blot, 0.25-0.5 ug/ml, Mouse, Rat Flow Cytometry (Fixed), 1-3 ug/1x10 ⁶ cells, Mouse ELISA, 0.1-0.5 ug/ml |

Anti-GTSE1 Antibody Picoband® (A06497-3) Images



Western blot analysis of GTSE1 using anti-GTSE1 antibody (A06497-3). Electrophoresis was performed on a 10% SDS-PAGE gel at 80V (Stacking gel) / 120V (Resolving gel) for 2 hours. The sample well of each lane was loaded with 30 ug of sample under reducing conditions. Lane 1: rat PC-12 whole cell lysates, Lane 2: mouse thymus tissue lysates, Lane 3: mouse RAW264.7 whole cell lysates. After electrophoresis, proteins were transferred to a nitrocellulose membrane at 150 mA for 50-90 minutes. Blocked the membrane with 5% non-fat milk/TBS for 1.5 hour at RT. The membrane was incubated with rabbit anti-GTSE1 antigen affinity purified polyclonal antibody (A06497-3) at 0.5 ug/mL overnight at 4°C, then washed with TBS-0.1% Tween 3 times with 5 minutes each and probed with a goat anti-rabbit IgG-HRP secondary antibody at a dilution of 1:5000 for 1.5 hour at RT. The signal is developed using an ECL Plus Western Blotting Substrate (Catalog # AR1196-200) with Tanon 5200 system. A specific band was detected for GTSE1 at approximately 100 kDa. The expected band size for GTSE1 is at 79 kDa.



Flow Cytometry analysis of ANA-1 cells using anti-GTSE1 antibody (A06497-3). Overlay histogram showing ANA-1 cells stained with A06497-3 (Blue line). To facilitate intracellular staining, cells were fixed with 4% paraformaldehyde and permeabilized with permeabilization buffer. The cells were blocked with 10% normal goat serum. And then incubated with rabbit anti-GTSE1 Antibody (A06497-3, 1 ug/1x10⁶ cells) for 30 min at 20°C. DyLight®488 conjugated goat anti-rabbit IgG (BA1127, 5-10 ug/1x10⁶ cells) was used as secondary antibody for 30 minutes at 20°C. Isotype control antibody (Green line) was rabbit IgG (1 ug/1x10⁶) used under the same conditions. Unlabelled sample without incubation with primary antibody and secondary antibody (Red line) was used as a blank control.

Submit a product review to [Biocompare.com](https://www.biocompare.com)

Submit a review of this product to [Biocompare.com](https://www.biocompare.com) to receive a \$20 Amazon.com giftcard! Your reviews help your fellow scientists make the right decisions. Thank you for your contribution.



Anti-GTSE1 Antibody

For Research Use Only. Not for use in diagnostic procedures.