

Anti-MCCC2 Antibody (Center)

Catalog Number: A06515-1

About MCCC2

MCCC2 is the small subunit of 3-methylcrotonyl-CoA carboxylase. This enzyme functions as a heterodimer and catalyzes the carboxylation of 3-methylcrotonyl-CoA to form 3-methylglutaconyl-CoA.

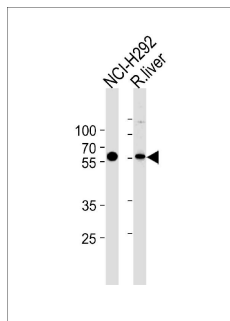
Overview

Product Name	Anti-MCCC2 Antibody (Center)
Reactive Species	Human, Rat
Description	Boster Bio Anti-MCCC2 Antibody (Center) (Catalog # A06515-1). Tested in WB, IHC-P, Flow Cytometry application(s). This antibody reacts with Human, Rat.
Application	Flow Cytometry, IHC-P, WB
Clonality	Polyclonal
Formulation	Purified polyclonal antibody supplied in PBS with 0.09% (W/V) sodium azide.
Storage Instructions	Maintain refrigerated at 2-8°C for up to 2 weeks. For long-term storage, store at -20°C in small aliquots to prevent freeze-thaw cycles.
Host	Rabbit
Uniprot ID	Q9HCC0

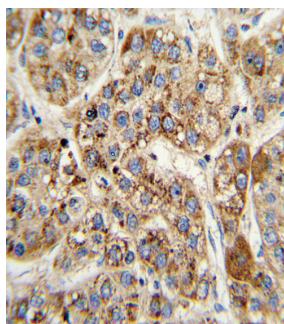
Technical Details

Immunogen	This MCCC2 antibody is generated from rabbits immunized with a KLH conjugated synthetic peptide between 163-189 amino acids from the Central region of human MCCC2.
Predicted Reactive Species	Mouse
Isotype	Rabbit IgG
Purification	This antibody is purified through a protein A column, followed by peptide affinity purification.
Suggested Dilutions	Dilute the sample so that the expected range of concentrations fall within the detection range of this kit. If the expected range of concentration is unknown, a pilot test should be conducted to decide the optimal dilution ratio for your samples. Some PubMed article(s) citing the expression level of this target are as follows: Boster Bio's internal QC testing used: WB: 1:1000 IHC-P: 1:10-1:50 FC: 1:10-1:50

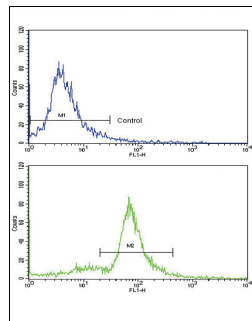
Anti-MCCC2 Antibody (Center) (A06515-1) Images



MCCC2 Antibody (Center) western blot analysis in NCI-H292 cell line and rat liver tissue lysates (35ug/lane). This demonstrates the MCCC2 antibody detected the MCCC2 protein (arrow).



Formalin-fixed and paraffin-embedded human hepatocarcinoma with MCCC2 Antibody (Center), which was peroxidase-conjugated to the secondary antibody, followed by DAB staining. This data demonstrates the use of this antibody for immunohistochemistry; clinical relevance has not been evaluated.



Flow cytometric analysis of ATDC5 cells using MCCC2 Antibody (Center) (bottom histogram) compared to a negative control cell (top histogram). FITC-conjugated goat-anti-rabbit secondary antibodies were used for the analysis.

Submit a product review to Biocompare.com

Submit a review of this product to Biocompare.com to receive a \$20 Amazon.com giftcard! Your reviews help your fellow scientists make the right decisions. Thank you for your contribution.



Anti-MCCC2 Antibody (Center)