

Anti-A-kinase anchor protein 6 AKAP6 Antibody

Catalog Number: A06520

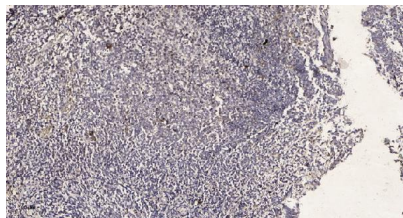
Overview

Product Name	Anti-A-kinase anchor protein 6 AKAP6 Antibody
Reactive Species	Human, Rat
Description	Boster Bio Anti-A-kinase anchor protein 6 AKAP6 Antibody catalog # A06520. Tested in IHC, IF applications. This antibody reacts with Human, Rat.
Application	IF, IHC
Clonality	Polyclonal
Formulation	Liquid form in PBS containing 50% glycerol, and 0.02% sodium azide.
Storage Instructions	Store at -20°C for one year. For short term storage and frequent use, store at 4°C for up to one month. Avoid repeated freeze-thaw cycles.
Host	Rabbit
Uniprot ID	Q13023

Technical Details

Immunogen	Synthesized peptide derived from human protein at AA range: 30-110
Cross Reactivity	No cross reactivity with other proteins.
Isotype	IgG
Form	Liquid
Concentration	1 mg/ml
Purification	AKAP6 antibody was affinity-purified from rabbit antiserum by affinity-chromatography using epitope-specific immunogen.
Suggested Dilutions	IHC 1:50-300 IF 1:50-200

Anti-A-kinase anchor protein 6 AKAP6 Antibody (A06520) Images



Immunohistochemical analysis of paraffin-embedded human tonsil. 1, Antibody was diluted at 1:200 (4° overnight). 2, Tris-EDTA, pH9.0 was used for antigen retrieval. 3, Secondary antibody was diluted at 1:200 (room temperature, 30min).

Submit a product review to Biocompare.com

Submit a review of this product to Biocompare.com to receive a \$20 Amazon.com giftcard! Your reviews help your fellow scientists make the right decisions. Thank you for your contribution.



Anti-A-kinase anchor protein 6 AKAP6 Antibody

For Research Use Only. Not for use in diagnostic procedures.