

## Anti-MAN1B1/Ermani Antibody

Catalog Number: A06537

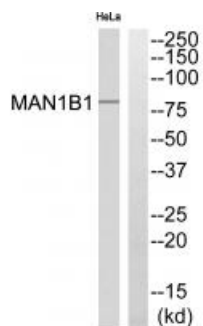
### Overview

Product Name	Anti-MAN1B1/Ermani Antibody
Reactive Species	Human, Mouse
Description	Boster Bio Anti-MAN1B1/Ermani Antibody (Catalog # A06537). Tested in WB applications. This antibody reacts with Human, Mouse.
Application	WB
Clonality	Polyclonal
Formulation	Rabbit IgG in phosphate buffered saline (without Mg <sup>2+</sup> and Ca <sup>2+</sup> ), pH 7.4, 150mM NaCl, 0.02% sodium azide and 50% glycerol.
Storage Instructions	Store at -20°C for one year. For short term storage and frequent use, store at 4°C for up to one month. Avoid repeated freeze-thaw cycles.
Host	Rabbit
Uniprot ID	Q9UKM7

### Technical Details

Immunogen	Synthesized peptide derived from internal of human MAN1B1.
Form	Liquid
Concentration	0.5-1mg/ml, actual concentration vary by lot. Use suggested dilution ratio to decide dilution procedure.
Purification	Immunogen affinity purified
Suggested Dilutions	<p>Dilute the sample so that the expected range of concentrations fall within the detection range of this kit.</p> <p>If the expected range of concentration is unknown, a pilot test should be conducted to decide the optimal dilution ratio for your samples.</p> <p>Some PubMed article(s) citing the expression level of this target are as follows: Boster Bio's internal QC testing used WB, 1:500-1:3000</p> <p>For protocols, please visit <a href="https://www.bosterbio.com/protocol-and-troubleshooting/">https://www.bosterbio.com/protocol-and-troubleshooting/</a></p>

## Anti-MAN1B1/Ermani Antibody (A06537) Images



Western blot analysis of extracts from 3T3 cells, using MAN1B1 antibody A06537.

### Submit a product review to Biocompare.com

Submit a review of this product to Biocompare.com to receive a \$20 Amazon.com giftcard! Your reviews help your fellow scientists make the right decisions. Thank you for your contribution.



Anti-MAN1B1/Ermani Antibody