

## Anti-Cysteine protease ATG4A ATG4A Antibody

Catalog Number: A06539

### About ATG4A

Autophagy, the process of bulk degradation of cellular proteins through an autophagosomic-lysosomal pathway is important for normal growth control and may be defective in tumor cells. It is involved in the preservation of cellular nutrients under starvation conditions as well as the normal turnover of cytosolic components (1,2). ATG4A, also known as AUTL2, is one of four mammalian orthologs of the yeast ATG4 protein; all four are cysteine proteases (3). ATG4 is required for ATG8 conjugation to phosphatidylethanolamine on autophagosomal membranes. In mammals, each ATG4 homolog shows a selective preference for the ATG8 homologs (4).

### Overview

Product Name	Anti-Cysteine protease ATG4A ATG4A Antibody
Reactive Species	Human, Mouse, Rat
Description	Boster Bio Anti-Cysteine protease ATG4A ATG4A Antibody (Catalog # A06539). Tested in ELISA, WB, IHC-P applications. This antibody reacts with Human, Mouse, Rat.
Application	ELISA, IHC-P, WB
Clonality	Polyclonal
Formulation	ATG4A antibody is supplied in PBS containing 0.02% sodium azide.
Storage Instructions	ATG4A antibody can be stored at 4°C for three months and -20°C, stable for up to one year.
Host	Rabbit
Uniprot ID	Q8WYN0

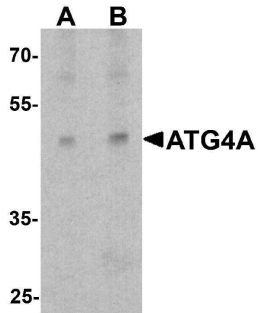
### Technical Details

Immunogen	ATG4A antibody was raised against an 18 amino acid peptide near the carboxy terminus of human ATG4A. The immunogen is located within the last 50 amino acids of ATG4A.
Predicted Reactive Species	Bovine
Cross Reactivity	ATG4A antibody is human, mouse and rat reactive. At least two isoforms of ATG4A are known to exist; this antibody will detect both isoforms. ATG4A is predicted to not cross-react with other ATG4 proteins.
Isotype	IgG
Form	Liquid
Concentration	1 mg/mL
Purification	ATG4A antibody is affinity chromatography purified via peptide column.

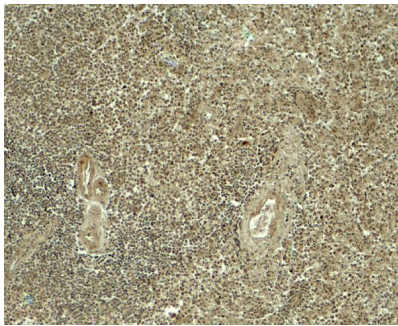
Suggested Dilutions

ATG4A antibody can be used for detection of ATG4A by Western blot at 1 - 2 ug/ml. Antibody can also be used for immunohistochemistry starting at 5 ug/mL.  
Antibody validated: Western Blot in mouse samples and Immunohistochemistry in human samples. All other applications and species not yet tested. Optimal dilutions for each application should be determined by the researcher.

## Anti-Cysteine protease ATG4A ATG4A Antibody (A06539) Images



Western blot analysis of ATG4A in EL4 cell lysate with ATG4A antibody at (A) 1 and (B) 2 ug/ml.



Immunohistochemistry of ATG4A in human spleen tissue with ATG4A antibody at 5 ug/ml.

### Submit a product review to [Biocompare.com](https://www.biocompare.com)

Submit a review of this product to [Biocompare.com](https://www.biocompare.com) to receive a \$20 Amazon.com giftcard! Your reviews help your fellow scientists make the right decisions. Thank you for your contribution.



Anti-Cysteine protease ATG4A ATG4A Antibody

For Research Use Only. Not for use in diagnostic procedures.