

Anti-CYFIP2 Antibody

Catalog Number: A06562

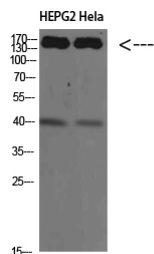
Overview

Product Name	Anti-CYFIP2 Antibody
Reactive Species	Human, Mouse, Rat
Description	Boster Bio Anti-CYFIP2 Antibody catalog # A06562. Tested in WB, ELISA applications. This antibody reacts with Human, Mouse, Rat.
Application	ELISA, WB
Clonality	Polyclonal
Formulation	Liquid in PBS containing 50% glycerol, 0.5% stabilizing protein and 0.02% sodium azide. *This antibody is supplied in a stabilized formulation. Compatibility with conjugation reactions depends on the chemistry of the conjugation method used. For conjugation methods that are not compatible with the stabilizing components present in this formulation, a carrier-free antibody format is required.
Storage Instructions	Store at -20°C for one year. For short term storage and frequent use, store at 4°C for up to one month. Avoid repeated freeze-thaw cycles.
Host	Rabbit
Uniprot ID	Q96F07

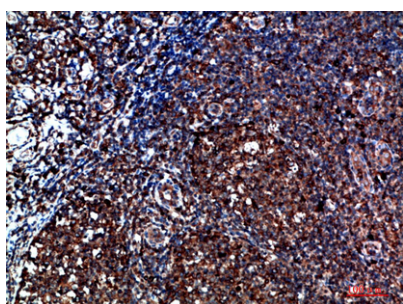
Technical Details

Immunogen	Synthesized peptide derived from CYFIP2 at AA range: 1171-1220
Isotype	IgG
Form	Liquid
Concentration	1 mg/ml
Purification	Immunogen affinity purified
Suggested Dilutions	WB 1:500-2000 ELISA 1:10000-20000

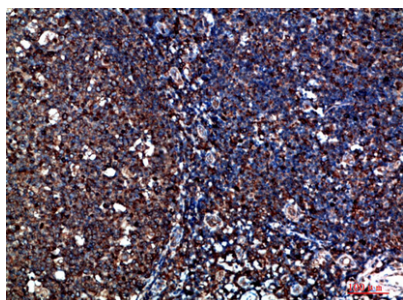
Anti-CYFIP2 Antibody (A06562) Images



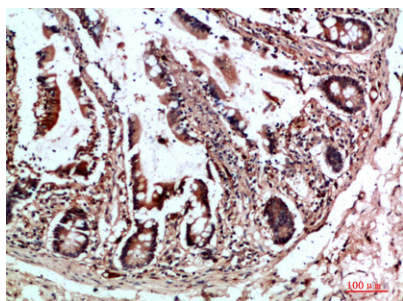
Western Blot analysis of HEPG2 HeLa cells using CYFIP2 Polyclonal Antibody diluted at 1:500. Secondary antibody was diluted at 1:20000



Immunohistochemical analysis of paraffin-embedded human tonsil, antibody was diluted at 1:200



Immunohistochemical analysis of paraffin-embedded human tonsil, antibody was diluted at 1:200



Immunohistochemical analysis of paraffin-embedded human colon, antibody was diluted at 1:200

Submit a product review to [Biocompare.com](https://www.biocompare.com)

Submit a review of this product to [Biocompare.com](https://www.biocompare.com) to receive a \$20 Amazon.com giftcard! Your reviews help your fellow scientists make the right decisions. Thank you for your contribution.



Anti-CYFIP2 Antibody

For Research Use Only. Not for use in diagnostic procedures.