

Anti-Cathepsin F CTSF Antibody

Catalog Number: A06600

About CTSF

G-protein coupled receptor for glutamate. Ligand binding causes a conformation change that triggers signaling via guanine nucleotide-binding proteins (G proteins) and modulates the activity of down-stream effectors, such as adenylate cyclase. Signaling inhibits adenylate cyclase activity.

Patrick. M. Downey, J Biomol Screen, Dec 2005; 10: 841 - 848.

RJ Wenthold, J. Biol. Chem., Jan 1994; 269: 1332 - 1339.

Toshiaki Watanabe, Cancer Res., Oct 2006; 66: 9804 - 9808.

V. Bruno, J. Neurosci., Sep 2000; 20: 6413.

Overview

Product Name	Anti-Cathepsin F CTSF Antibody
Reactive Species	Human, Mouse, Rat
Description	Boster Bio Anti-Cathepsin F CTSF Antibody catalog # A06600. Tested in WB applications. This antibody reacts with Human,Mouse,Rat.
Application	WB
Clonality	Polyclonal
Formulation	Rabbit IgG, 1mg/ml in PBS with 0.02% sodium azide, 50% glycerol, pH7.2
Storage Instructions	Store at -20°C for one year. For short term storage and frequent use, store at 4°C for up to one month. Avoid repeated freeze-thaw cycles.
Host	Rabbit
Uniprot ID	Q9UBX1

Technical Details

Immunogen	Synthesized peptide derived from human EDG-7
Predicted Reactive Species	Chimpanzee, Drosophila, Macaque
Cross Reactivity	No cross reactivity with other proteins.
Isotype	IgG
Form	Liquid
Concentration	1 mg/ml

Purification	The antibody was affinity-purified from rabbit antiserum by affinity-chromatography using epitope-specific immunogen and the purity is > 95% (by SDS-PAGE).
Suggested Dilutions	<p>Dilute the sample so that the expected range of concentrations fall within the detection range of this kit.</p> <p>If the expected range of concentration is unknown, a pilot test should be conducted to decide the optimal dilution ratio for your samples.</p> <p>Some PubMed article(s) citing the expression level of this target are as follows:</p> <p>Boster Bio's internal QC testing used:</p> <p>WB: 1:500-1:1000</p>

Anti-Cathepsin F CTSF Antibody (A06600) Images

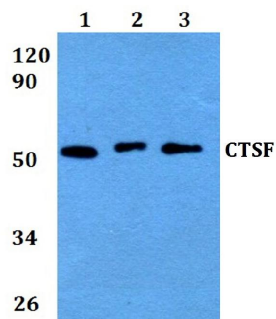


Figure 1. Western blotting validation for Anti-Cathepsin F CTSF Antibody A06600

Western blot (WB) analysis of CTSF polyclonal antibody at 1:500 dilution

Lane1:HEK293T whole cell lysate

Lane2:Raw264.7 whole cell lysate

Lane3:H9C2 whole cell lysate

Electrophoresis was performed on a SDS-PAGE gel. To determine SDS-PAGE gel concentration

Submit a product review to Biocompare.com

Submit a review of this product to Biocompare.com to receive a \$20 Amazon.com giftcard! Your reviews help your fellow scientists make the right decisions. Thank you for your contribution.



Anti-Cathepsin F CTSF Antibody