

Anti-Borealin CDCA8 Antibody

Catalog Number: A06612

About CDCA8

CDCA8 is a component of a chromosomal passenger complex (CPC) required for stability of the bipolar mitotic spindle. The chromosomal passenger complex, which includes Survivin, CDCA8, INCENP and Aurora-B, is known to play crucial roles during mitosis and cell division. It was found that CDCA8 interacting with Aurora-B, INCENP and Survivin, increases during G2/M phase and then reduces after exit from M phase. CDCA8 is cell cycle regulated, down-regulated in response to p53/Rb-signaling, and up-regulated in many types of cancerous tissues. In Drosophila cells, inactivation of CDCA8 results in polyploidy, delayed mitosis and abnormal tissue development, indicating its critical role for cell proliferation. Recent studies show that CDCA8 is essential for cell proliferation during early embryonic development, and its early embryonic lethality cannot be rescued by the loss of p53. Its aberrant expression is linked to a poor prognosis for gastric cancer.

Overview

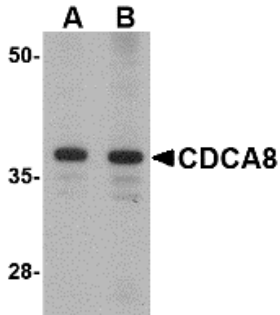
Product Name	Anti-Borealin CDCA8 Antibody
Reactive Species	Human, Mouse, Rat
Description	Boster Bio Anti-Borealin CDCA8 Antibody (Catalog # A06612). Tested in ELISA, WB, IF applications. This antibody reacts with Human, Mouse, Rat.
Application	ELISA, IF, WB
Clonality	Polyclonal
Formulation	CDCA8 Antibody is supplied in PBS containing 0.02% sodium azide.
Storage Instructions	CDCA8 antibody can be stored at 4°C for three months and -20°C, stable for up to one year. Avoid repeated freeze-thaw cycles. Antibodies should not be exposed to prolonged high temperatures.
Host	Rabbit
Uniprot ID	Q53HL2

Technical Details

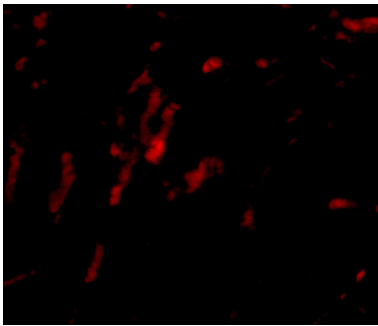
Immunogen	CDCA8 antibody was raised against a 19 amino acid synthetic peptide near the amino terminus of the human CDCA8. The immunogen is located within the first 50 amino acids of CDCA8.
Predicted Reactive Species	Bovine
Cross Reactivity	NLGN2 antibody is human, mouse and rat reactive. At least two isoforms are known to exist; this antibody will detect both isoforms. NLGN2 antibody is predicted to not cross-react with other members of the NLGN protein family.
Isotype	IgG
Form	Liquid

Concentration	1 mg/mL
Purification	CDCA8 Antibody is affinity chromatography purified via peptide column.
Suggested Dilutions	<p>Dilute the sample so that the expected range of concentrations fall within the detection range of this kit.</p> <p>If the expected range of concentration is unknown, a pilot test should be conducted to decide the optimal dilution ratio for your samples.</p> <p>Some PubMed article(s) citing the expression level of this target are as follows:</p> <p>Boster Bio's internal QC testing used:</p> <p>CDCA8 antibody can be used for detection of CDCA8 by Western blot at 1 and 2 ug/mL. Antibody can also be used for immunoflourescence starting at 20 ug/mL. For immunofluorescence start at 20 ug/mL.</p> <p>Antibody validated: Western Blot in rat samples and Immunofluorescence in rat samples. All other applications and species not yet tested. Optimal dilutions for each application should be determined by the researcher.</p>

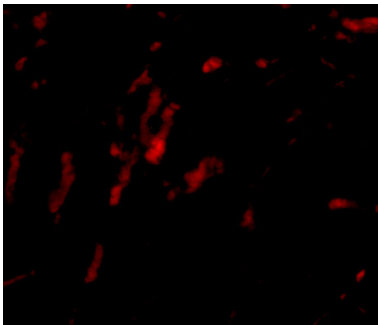
Anti-Borealin CDCA8 Antibody (A06612) Images



Western blot analysis of CDCA8 in Rat kidney lysate with CDCA8 antibody at (A) 1 and (B) 2 ug/mL.



Immunofluorescence of CDCA8 in rat kidney tissue with CDCA8 antibody at 20 ug/mL.



Immunofluorescence of CDCA8 in Rat Kidney cells with CDCA8 antibody at 20 ug/mL.

Submit a product review to [Biocompare.com](https://www.biocompare.com)

Submit a review of this product to [Biocompare.com](https://www.biocompare.com) to receive a \$20 Amazon.com giftcard! Your reviews help your fellow scientists make the right decisions. Thank you for your contribution.



Anti-Borealin CDCA8 Antibody