

Anti-CLC1B CLEC1B Antibody

Catalog Number: A06619

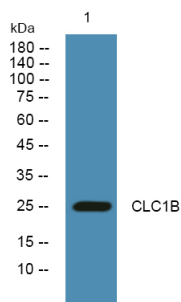
Overview

Product Name	Anti-CLC1B CLEC1B Antibody
Reactive Species	Human, Mouse
Description	Boster Bio Anti-CLC1B CLEC1B Antibody catalog # A06619. Tested in WB, ELISA applications. This antibody reacts with Human, Mouse.
Application	ELISA, WB
Clonality	Polyclonal
Formulation	Liquid form in PBS containing 50% glycerol, and 0.02% sodium azide.
Storage Instructions	Store at -20°C for one year. For short term storage and frequent use, store at 4°C for up to one month. Avoid repeated freeze-thaw cycles.
Host	Rabbit
Uniprot ID	Q9P126

Technical Details

Immunogen	Synthesized peptide derived from part region of human protein
Cross Reactivity	No cross reactivity with other proteins.
Isotype	IgG
Form	Liquid
Concentration	1 mg/ml
Purification	CLC1B antibody was affinity-purified from rabbit antiserum by affinity-chromatography using epitope-specific immunogen.
Suggested Dilutions	WB 1:500-2000 ELISA 1:5000-20000

Anti-CLC1B CLEC1B Antibody (A06619) Images



Western blot analysis of lysates from K562 cells, primary antibody was diluted at 1:1000, 4°over night

Submit a product review to Biocompare.com

Submit a review of this product to Biocompare.com to receive a \$20 Amazon.com giftcard! Your reviews help your fellow scientists make the right decisions. Thank you for your contribution.



Anti-CLC1B CLEC1B Antibody

For Research Use Only. Not for use in diagnostic procedures.