

Anti-MAPE Antibody (C-term)

Catalog Number: A06628-1

About PRAME

MAPE is an antigen that is predominantly expressed in human melanomas and that is recognized by cytolytic T lymphocytes. It is not expressed in normal tissues, except testis. This expression pattern is similar to that of other CT antigens, such as MAGE, BAGE and GAGE. However, unlike these other CT antigens, its gene is also expressed in acute leukemias.

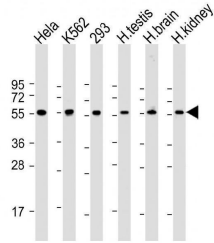
Overview

Product Name	Anti-MAPE Antibody (C-term)
Reactive Species	Human
Description	Boster Bio Anti-MAPE Antibody (C-term) (Catalog # A06628-1). Tested in IHC-P, WB, Flow Cytometry application(s). This antibody reacts with Human.
Application	Flow Cytometry, IHC-P, WB
Clonality	Polyclonal
Formulation	Purified polyclonal antibody supplied in PBS with 0.09% (W/V) sodium azide.
Storage Instructions	Maintain refrigerated at 2-8°C for up to 2 weeks. For long-term storage, store at -20°C in small aliquots to prevent freeze-thaw cycles.
Host	Rabbit
Uniprot ID	P78395

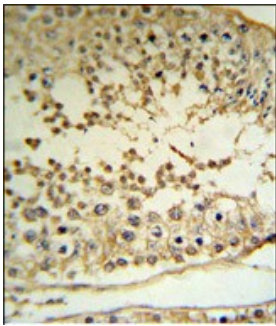
Technical Details

Immunogen	This MAPE antibody is generated from rabbits immunized with a KLH conjugated synthetic peptide between 476-502 amino acids from the C-terminal region of human MAPE.
Predicted Reactive Species	Chicken, Rat, Xenopus
Isotype	Rabbit IgG
Purification	This antibody is purified through a protein A column, followed by peptide affinity purification.
Suggested Dilutions	WB: 1:2000 IHC-P: 1:50-1:100 FC: 1:25

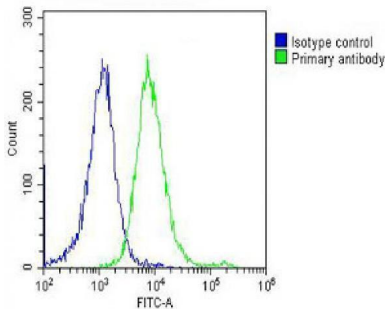
Anti-MAPE Antibody (C-term) (A06628-1) Images



All lanes : Anti-MAPE Antibody (C-term) at 1:2000 dilution
Lane 1: HeLa whole cell lysate
Lane 2: K562 whole cell lysate
Lane 3: 293 whole cell lysate
Lane 4: human testis lysate
Lane 5: human brain lysate
Lane 6: human kidney lysate
Lysates/proteins at 20 µg per lane. Secondary Goat Anti-Rabbit IgG, (H+L), Peroxidase conjugated at 1/10000 dilution. Predicted band size : 58 kDa
Blocking/Dilution buffer: 5% NFD/MTBST.



MAPE Antibody (C-term) IHC analysis in formalin fixed and paraffin embedded human testis tissue followed by peroxidase conjugation of the secondary antibody and DAB staining. This data demonstrates the use of the MAPE Antibody (C-term) for immunohistochemistry. Clinical relevance has not been evaluated.



Overlay histogram showing HeLa cells stained with A06628-1 (green line). The cells were fixed with 2% paraformaldehyde (10 min) and then permeabilized with 90% methanol for 10 min. The cells were then incubated in 2% bovine serum albumin to block non-specific protein-protein interactions followed by the antibody (A06628-1, 1:25 dilution) for 60 min at 37°C. The secondary antibody used was Goat-Anti-Rabbit IgG, DyLight® 488 Conjugated Highly Cross-Adsorbed at 1/200 dilution for 40 min at 37°C. Isotype control antibody (blue line) was rabbit IgG (1µg/1x10⁶ cells) used under the same conditions. Acquisition of >10,000 events was performed.

Submit a product review to Biocompare.com

Submit a review of this product to Biocompare.com to receive a \$20 Amazon.com giftcard! Your reviews help your fellow scientists make the right decisions. Thank you for your contribution.



Anti-MAPE Antibody (C-term)

For Research Use Only. Not for use in diagnostic procedures.