

## Anti-Ribosomal Protein S20 RPS20 Antibody

Catalog Number: A06634S20

### Overview

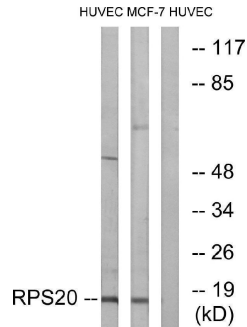
|                      |  |
|----------------------|--|
| Product Name         | Anti-Ribosomal Protein S20 RPS20 Antibody  |
| Reactive Species     | Human, Mouse, Rat  |
| Description          | Boster Bio Anti-Ribosomal Protein S20 RPS20 Antibody catalog # A06634S20. Tested in ELISA, IF, IHC, WB applications. This antibody reacts with Human, Mouse, Rat.  |
| Application          | ELISA, IF, IHC, WB   |
| Clonality            | Polyclonal   |
| Formulation          | Liquid in PBS containing 50% glycerol, 0.5% stabilizing protein and 0.02% sodium azide.<br>*This antibody is supplied in a stabilized formulation.<br>Compatibility with conjugation reactions depends on the chemistry of the conjugation method used. For conjugation methods that are not compatible with the stabilizing components present in this formulation, a carrier-free antibody format is required. |
| Storage Instructions | Store at -20°C for one year. For short term storage and frequent use, store at 4°C for up to one month. Avoid repeated freeze-thaw cycles.   |
| Host                 | Rabbit   |
| Uniprot ID           | P60866   |

### Technical Details

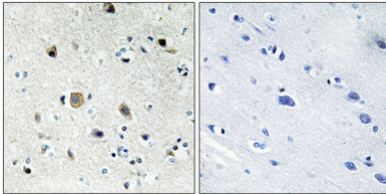
|                     |   |
|---------------------|---|
| Immunogen           | The antiserum was produced against synthesized peptide derived from human RPS20. AA range:31-80                       |
| Cross Reactivity    | No cross reactivity with other proteins.  |
| Isotype             | IgG   |
| Form                | Liquid  |
| Concentration       | 1 mg/ml   |
| Purification        | The antibody was affinity-purified from rabbit antiserum by affinity-chromatography using epitope-specific immunogen. |
| Suggested Dilutions | WB 1:500-1:2000<br>IHC 1:100-1:300<br>IF 1:200-1:1000<br>ELISA 1:40000  |



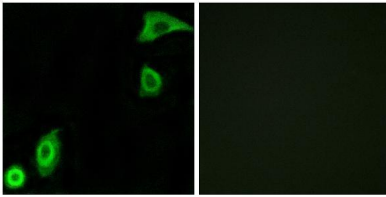
## Anti-Ribosomal Protein S20 RPS20 Antibody (A06634S20) Images



Western blot analysis of lysates from HUVEC and MCF-7 cells, using RPS20 Antibody. The lane on the right is blocked with the synthesized peptide.



Immunohistochemical analysis of paraffin-embedded Human brain. Antibody was diluted at 1:100 (4° overnight). High-pressure and temperature Tris-EDTA, pH8.0 was used for antigen retrieval. Negative control (right) obtained from antibody was pre-absorbed by immunogen peptide.



Immunofluorescence analysis of A549 cells, using RPS20 Antibody. The picture on the right is blocked with the synthesized peptide.

### Submit a product review to [Biocompare.com](https://www.biocompare.com)

Submit a review of this product to [Biocompare.com](https://www.biocompare.com) to receive a \$20 Amazon.com giftcard! Your reviews help your fellow scientists make the right decisions. Thank you for your contribution.



Anti-Ribosomal Protein S20 RPS20 Antibody

For Research Use Only. Not for use in diagnostic procedures.