

## Anti-MPZL1 Antibody Picoband®

Catalog Number: A06667-1

### About MPZL1

Myelin protein zero-like protein 1 is a protein that in humans is encoded by the MPZL1 gene. MPZL1 is a cell surface receptor, which is involved in signal transduction processes. MPZL1 recruits PTPN11/SHP-2 to the cell membrane and is a putative substrate of PTPN11/SHP-2. MPZL1 is a major receptor for concanavalin A (ConA) and is involved in cell.

### Overview

Product Name	Anti-MPZL1 Antibody Picoband®
Reactive Species	Human
Description	Boster Bio Anti-MPZL1 Antibody Picoband® catalog # A06667-1. Tested in ELISA, WB applications. This antibody reacts with Human. The brand Picoband indicates this is a premium antibody that guarantees superior quality, high affinity, and strong signals with minimal background in Western blot applications. Only our best-performing antibodies are designated as Picoband, ensuring unmatched performance.
Application	ELISA, WB
Clonality	Polyclonal
Formulation	Each vial contains 4 mg Trehalose, 0.9 mg NaCl, 0.2 mg Na <sub>2</sub> HPO <sub>4</sub> .
Storage Instructions	At -20°C for one year from date of receipt. After reconstitution, at 4°C for one month. It can also be aliquotted and stored frozen at -20°C for six months. Avoid repeated freezing and thawing.
Host	Rabbit
Uniprot ID	O95297

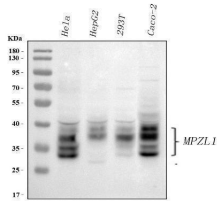
### Technical Details

Immunogen	E.coli-derived human MPZL1 recombinant protein (Position: A37-N269).
Recommended Detection Systems	Boster recommends Enhanced Chemiluminescent Kit with anti-Rabbit IgG (EK1002) for Western blot.
Cross Reactivity	No cross-reactivity with other proteins.
Isotype	Rabbit IgG
Form	Lyophilized
Concentration	Adding 0.2 ml of distilled water will yield a concentration of 500 µg/ml.
Purification	Immunogen affinity purified.

Suggested Dilutions

Western blot, 0.25-0.5 ug/ml, Human  
ELISA, 0.1-0.5 ug/ml, -

## Anti-MPZL1 Antibody Picoband® (A06667-1) Images



Western blot analysis of MPZL1 using anti-MPZL1 antibody (A06667-1). Electrophoresis was performed on a 5-20% SDS-PAGE gel at 70V (Stacking gel) / 90V (Resolving gel) for 2-3 hours. The sample well of each lane was loaded with 30 ug of sample under reducing conditions. Lane 1: human HeLa whole cell lysates, Lane 2: human HepG2 whole cell lysates, Lane 3: human 293T whole cell lysates, Lane 4: human Caco-2 whole cell lysates. After electrophoresis, proteins were transferred to a nitrocellulose membrane at 150 mA for 50-90 minutes. Blocked the membrane with 5% non-fat milk/TBS for 1.5 hour at RT. The membrane was incubated with rabbit anti-MPZL1 antigen affinity purified polyclonal antibody (Catalog # A06667-1) at 0.5 ug/mL overnight at 4°C, then washed with TBS-0.1%Tween 3 times with 5 minutes each and probed with a goat anti-rabbit IgG-HRP secondary antibody at a dilution of 1:5000 for 1.5 hour at RT. The signal is developed using an Enhanced Chemiluminescent detection (ECL) kit (Catalog # EK1002) with Tanon 5200 system. A specific band was detected for MPZL1 at approximately 29-37 kDa. The expected band size for MPZL1 is at 29 kDa.

### Submit a product review to [Biocompare.com](https://www.biocompare.com)

Submit a review of this product to [Biocompare.com](https://www.biocompare.com) to receive a \$20 Amazon.com giftcard! Your reviews help your fellow scientists make the right decisions. Thank you for your contribution.



Anti-MPZL1 Antibody

For Research Use Only. Not for use in diagnostic procedures.