

## Anti-Tripeptidyl peptidase II/TPPII/TPP2 Antibody Picoband®

Catalog Number: A06668-2

### About TPP2

Tripeptidyl-peptidase 2 is an enzyme that in humans is encoded by the TPP2 gene. This gene encodes a mammalian peptidase that, at neutral pH, removes tripeptides from the N terminus of longer peptides. The protein has a specialized function that is essential for some MHC class I antigen presentation. The protein is a high molecular mass serine exopeptidase; the amino acid sequence surrounding the serine residue at the active site is similar to the peptidases of the subtilisin class rather than the trypsin class.

### Overview

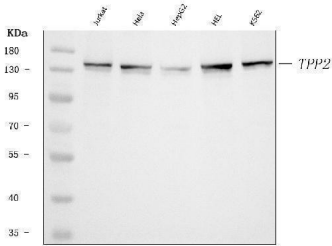
Product Name	Anti-Tripeptidyl peptidase II/TPPII/TPP2 Antibody Picoband®
Reactive Species	Human, Mouse, Rat
Description	Boster Bio Anti-Tripeptidyl peptidase II/TPPII/TPP2 Antibody Picoband® catalog # A06668-2. Tested in ELISA, Flow Cytometry, IF, IHC, ICC, WB applications. This antibody reacts with Human, Mouse, Rat. The brand Picoband indicates this is a premium antibody that guarantees superior quality, high affinity, and strong signals with minimal background in Western blot applications. Only our best-performing antibodies are designated as Picoband, ensuring unmatched performance.
Application	ELISA, Flow Cytometry, IF, IHC, ICC, WB
Clonality	Polyclonal
Formulation	Each vial contains 4 mg Trehalose, 0.9 mg NaCl, 0.2 mg Na <sub>2</sub> HPO <sub>4</sub> .
Storage Instructions	At -20°C for one year from date of receipt. After reconstitution, at 4°C for one month. It can also be aliquotted and stored frozen at -20°C for six months. Avoid repeated freezing and thawing.
Host	Rabbit
Uniprot ID	P29144

### Technical Details

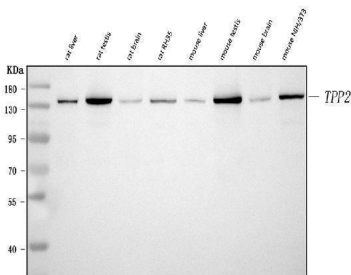
Immunogen	E.coli-derived human Tripeptidyl peptidase II/TPPII/TPP2 recombinant protein (Position: E32-K1001).
Recommended Detection Systems	Boster recommends Enhanced Chemiluminescent Kit with anti-Rabbit IgG (EK1002) for Western blot, and HRP Conjugated anti-Rabbit IgG Super Vision Assay Kit (SV0002-1) for IHC(P) and ICC.
Cross Reactivity	No cross-reactivity with other proteins.
Isotype	Rabbit IgG
Form	Lyophilized
Concentration	Adding 0.2 ml of distilled water will yield a concentration of 500 µg/ml.

Purification	Immunogen affinity purified.
Suggested Dilutions	Western blot, 0.1-0.25 ug/ml, Human, Mouse, Rat Immunohistochemistry(Paraffin-embedded Section), 2-5 ug/ml, Human Immunocytochemistry/Immunofluorescence, 5 ug/ml, Human Flow Cytometry (Fixed), 1-3 ug/1x10 <sup>6</sup> cells, Human ELISA, 0.1-0.5 ug/ml, -

## Anti-Tripeptidyl peptidase II/TPPII/TPP2 Antibody Picoband® (A06668-2) Images

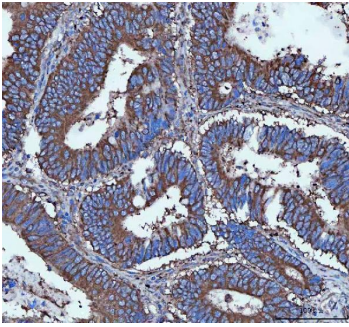


Western blot analysis of Tripeptidyl peptidase II/TPPII/TPP2 using anti-Tripeptidyl peptidase II/TPPII/TPP2 antibody (A06668-2). Electrophoresis was performed on a 5-20% SDS-PAGE gel at 70V (Stacking gel) / 90V (Resolving gel) for 2-3 hours. The sample well of each lane was loaded with 30 ug of sample under reducing conditions. Lane 1: human Jurkat whole cell lysates, Lane 2: human HeLa whole cell lysates, Lane 3: human HepG2 whole cell lysates, Lane 4: human HEL whole cell lysates, Lane 5: human K562 whole cell lysates. After electrophoresis, proteins were transferred to a nitrocellulose membrane at 150 mA for 50-90 minutes. Blocked the membrane with 5% non-fat milk/TBS for 1.5 hour at RT. The membrane was incubated with rabbit anti-Tripeptidyl peptidase II/TPPII/TPP2 antigen affinity purified polyclonal antibody (Catalog # A06668-2) at 0.25 ug/mL overnight at 4°C, then washed with TBS-0.1%Tween 3 times with 5 minutes each and probed with a goat anti-rabbit IgG-HRP secondary antibody at a dilution of 1:5000 for 1.5 hour at RT. The signal is developed using an Enhanced Chemiluminescent detection (ECL) kit (Catalog # EK1002) with Tanon 5200 system. A specific band was detected for Tripeptidyl peptidase II/TPPII/TPP2 at approximately 138 kDa. The expected band size for Tripeptidyl peptidase II/TPPII/TPP2 is at 138 kDa.

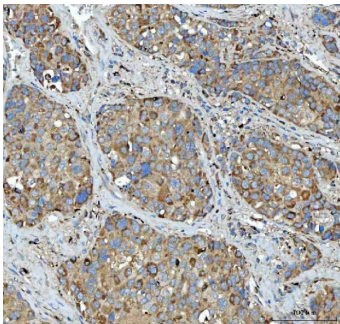


Western blot analysis of Tripeptidyl peptidase II/TPPII/TPP2 using anti-Tripeptidyl peptidase II/TPPII/TPP2 antibody (A06668-2). Electrophoresis was performed on a 5-20% SDS-PAGE gel at 70V (Stacking gel) / 90V (Resolving gel) for 2-3 hours. The sample well of each lane was loaded with 30 ug of sample under reducing conditions. Lane 1: rat liver tissue lysates, Lane 2: rat testis tissue lysates, Lane 3: rat brain tissue lysates, Lane 4: rat RH35 whole cell lysates, Lane 5: mouse liver tissue lysates, Lane 6: mouse testis tissue lysates, Lane 7: mouse brain tissue lysates, Lane 8: mouse NIH/3T3 whole cell lysates. After electrophoresis, proteins were transferred to a nitrocellulose membrane at 150 mA for 50-90 minutes. Blocked the membrane with 5% non-fat milk/TBS for 1.5 hour at RT. The membrane was incubated with rabbit anti-Tripeptidyl peptidase II/TPPII/TPP2 antigen affinity purified polyclonal antibody (Catalog # A06668-2) at 0.25 ug/mL overnight at 4°C, then washed with TBS-0.1%Tween 3 times with 5 minutes each and probed with a goat anti-rabbit IgG-HRP secondary antibody at a dilution of 1:5000 for 1.5 hour at RT. The signal is developed using an Enhanced Chemiluminescent detection (ECL) kit (Catalog # EK1002) with Tanon 5200 system. A specific band was detected for Tripeptidyl peptidase II/TPPII/TPP2 at approximately 138 kDa. The expected band size for Tripeptidyl peptidase II/TPPII/TPP2 is at 138 kDa.

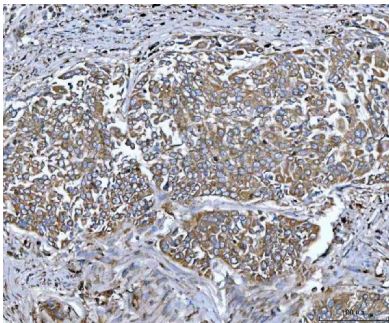
IHC analysis of Tripeptidyl peptidase II/TPPII/TPP2 using anti-Tripeptidyl peptidase II/TPPII/TPP2 antibody (A06668-2).



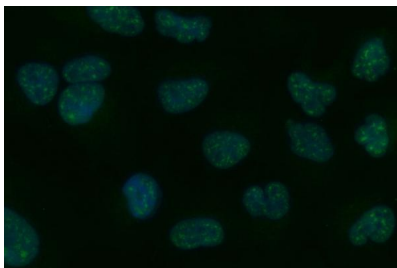
Tripeptidyl peptidase II/TPPII/TPP2 was detected in a paraffin-embedded section of human colorectal adenocarcinoma tissue. Heat mediated antigen retrieval was performed in EDTA buffer (pH 8.0, epitope retrieval solution). The tissue section was blocked with 10% goat serum. The tissue section was then incubated with 2 ug/ml rabbit anti-Tripeptidyl peptidase II/TPPII/TPP2 Antibody (A06668-2) overnight at 4°C. Peroxidase Conjugated Goat Anti-rabbit IgG was used as secondary antibody and incubated for 30 minutes at 37°C. The tissue section was developed using HRP Conjugated Rabbit IgG Super Vision Assay Kit (Catalog # SV0002) with DAB as the chromogen.



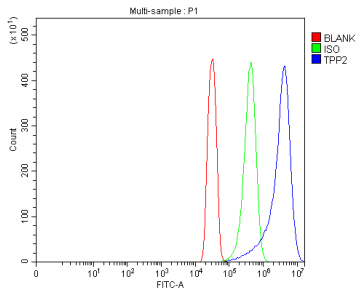
IHC analysis of Tripeptidyl peptidase II/TPPII/TPP2 using anti-Tripeptidyl peptidase II/TPPII/TPP2 antibody (A06668-2). Tripeptidyl peptidase II/TPPII/TPP2 was detected in a paraffin-embedded section of human liver cancer tissue. Heat mediated antigen retrieval was performed in EDTA buffer (pH 8.0, epitope retrieval solution). The tissue section was blocked with 10% goat serum. The tissue section was then incubated with 2 ug/ml rabbit anti-Tripeptidyl peptidase II/TPPII/TPP2 Antibody (A06668-2) overnight at 4°C. Peroxidase Conjugated Goat Anti-rabbit IgG was used as secondary antibody and incubated for 30 minutes at 37°C. The tissue section was developed using HRP Conjugated Rabbit IgG Super Vision Assay Kit (Catalog # SV0002) with DAB as the chromogen.



IHC analysis of Tripeptidyl peptidase II/TPPII/TPP2 using anti-Tripeptidyl peptidase II/TPPII/TPP2 antibody (A06668-2). Tripeptidyl peptidase II/TPPII/TPP2 was detected in a paraffin-embedded section of human lung cancer tissue. Heat mediated antigen retrieval was performed in EDTA buffer (pH 8.0, epitope retrieval solution). The tissue section was blocked with 10% goat serum. The tissue section was then incubated with 2 ug/ml rabbit anti-Tripeptidyl peptidase II/TPPII/TPP2 Antibody (A06668-2) overnight at 4°C. Peroxidase Conjugated Goat Anti-rabbit IgG was used as secondary antibody and incubated for 30 minutes at 37°C. The tissue section was developed using HRP Conjugated Rabbit IgG Super Vision Assay Kit (Catalog # SV0002) with DAB as the chromogen.



IF analysis of Tripeptidyl peptidase II/TPPII/TPP2 using anti-Tripeptidyl peptidase II/TPPII/TPP2 antibody (A06668-2). Tripeptidyl peptidase II/TPPII/TPP2 was detected in an immunocytochemical section of A549 cells. Enzyme antigen retrieval was performed using IHC enzyme antigen retrieval reagent (AR0022) for 15 mins. The cells were blocked with 10% goat serum. And then incubated with 5 ug/mL rabbit anti-Tripeptidyl peptidase II/TPPII/TPP2 Antibody (A06668-2) overnight at 4°C. DyLight®488 Conjugated Goat Anti-Rabbit IgG (BA1127) was used as secondary antibody at 1:100 dilution and incubated for 30 minutes at 37°C. The section was counterstained with DAPI. Visualize using a fluorescence microscope and filter sets appropriate for the label used.



Flow Cytometry analysis of SiHa cells using anti-Tropomyosin 2/TPM2 antibody (A06668-2). Overlay histogram showing SiHa cells stained with A06668-2 (Blue line). To facilitate intracellular staining, cells were fixed with 4% paraformaldehyde and permeabilized with permeabilization buffer. The cells were blocked with 10% normal goat serum. And then incubated with rabbit anti-Tropomyosin 2/TPM2 Antibody (A06668-2, 1 ug/1x10<sup>6</sup> cells) for 30 min at 20°C. DyLight®488 conjugated goat anti-rabbit IgG (BA1127, 5-10 ug/1x10<sup>6</sup> cells) was used as secondary antibody for 30 minutes at 20°C. Isotype control antibody (Green line) was rabbit IgG (1 ug/1x10<sup>6</sup>) used under the same conditions. Unlabelled sample without incubation with primary antibody and secondary antibody (Red line) was used as a blank control.

## Submit a product review to Biocompare.com

Submit a review of this product to Biocompare.com to receive a \$20 Amazon.com giftcard! Your reviews help your fellow scientists make the right decisions. Thank you for your contribution.



### Anti-Tripeptidyl peptidase II/TPPII/TPP2 Antibody

For Research Use Only. Not for use in diagnostic procedures.