

Anti-Anosmin ANOS1 Antibody

Catalog Number: A06684-1

About KAL1

Mutations in Anosmin-1, an extracellular matrix-associated glycosylated protein, have been linked with Kallmann Syndrome (KS), an X-linked genetic disorder characterized by loss of smell caused by abnormal olfactory bulb development and delayed puberty caused by disrupted migration of the gonadotropin-releasing hormone neuron. Anosmin-1 has been shown to directly bind FGFR1 via its N-terminal cysteine-rich domain, whey-acidic protein-like domain, and its first FnIII repeat with the D2 and D3 ectodomains of FGFR1. It is thought that Anosmin-1 can modulate FGFR1 signaling and have opposing effects on the formation and activation of FGF2-FGFR1-heparin complex.

Overview

Product Name	Anti-Anosmin ANOS1 Antibody
Reactive Species	Human
Description	Boster Bio Anti-Anosmin ANOS1 Antibody (Catalog # A06684-1). Tested in ELISA, WB, ICC, IF applications. This antibody reacts with Human.
Application	ELISA, IF, ICC, WB
Clonality	Polyclonal
Formulation	Anosmin Antibody is supplied in PBS containing 0.02% sodium azide.
Storage Instructions	Anosmin antibody can be stored at 4 °C, stable for one year. Avoid repeated freeze-thaw cycles. Antibodies should not be exposed to prolonged high temperatures.
Host	Rabbit
Uniprot ID	P23352

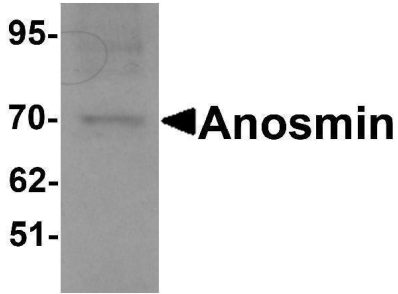
Technical Details

Immunogen	Anosmin antibody was raised against an 18 amino acid synthetic peptide near the center of human Anosmin. The immunogen is located within amino acids 430 - 480 of Anosmin.
Predicted Reactive Species	Bovine
Isotype	IgG
Form	Liquid
Concentration	1 mg/mL
Purification	Anosmin Antibody is affinity chromatography purified via peptide column.
Suggested Dilutions	Anosmin antibody can be used for detection of Anosmin by Western blot at 1 ug/mL. Antibody can also be used for immunocytochemistry starting at 5 ug/mL. For immunofluorescence start at 20

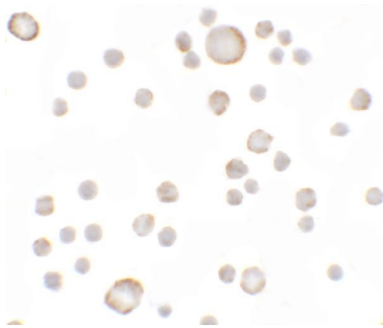
ug/mL.

Antibody validated: Western Blot in human samples; Immunocytochemistry in human samples and Immunofluorescence in human samples. All other applications and species not yet tested. Optimal dilutions for each application should be determined by the researcher.

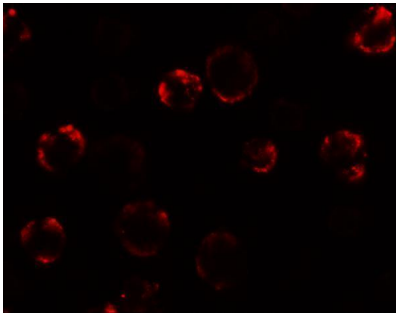
Anti-Anosmin ANOS1 Antibody (A06684-1) Images



Western blot analysis of Anosmin in MCF7 cell lysate with Anosmin antibody at 1 ug/mL.



Immunocytochemistry of Anosmin in MCF7 cells with Anosmin antibody at 5 ug/mL.



Immunofluorescence of Anosmin in MCF7 cells with Anosmin antibody at 20 ug/mL.

Submit a product review to [Biocompare.com](https://www.biocompare.com)

Submit a review of this product to [Biocompare.com](https://www.biocompare.com) to receive a \$20 Amazon.com giftcard! Your reviews help your fellow scientists make the right decisions. Thank you for your contribution.



Anti-Anosmin ANOS1 Antibody

For Research Use Only. Not for use in diagnostic procedures.