

Anti-Epiregulin EREG Antibody

Catalog Number: A06692

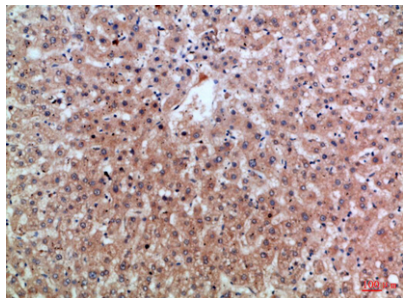
Overview

Product Name	Anti-Epiregulin EREG Antibody
Reactive Species	Human, Mouse, Rat
Description	Boster Bio Anti-Epiregulin EREG Antibody catalog # A06692. Tested in ELISA, IHC applications. This antibody reacts with Human, Mouse, Rat.
Application	ELISA, IF, IHC
Clonality	Polyclonal
Formulation	Liquid in PBS containing 50% glycerol, 0.5% stabilizing protein and 0.02% sodium azide. *This antibody is supplied in a stabilized formulation. Compatibility with conjugation reactions depends on the chemistry of the conjugation method used. For conjugation methods that are not compatible with the stabilizing components present in this formulation, a carrier-free antibody format is required.
Storage Instructions	Store at -20°C for one year. For short term storage and frequent use, store at 4°C for up to one month. Avoid repeated freeze-thaw cycles.
Host	Rabbit
Uniprot ID	O14944

Technical Details

Immunogen	Synthetic peptide from human protein at AA range: 71-120
Cross Reactivity	No cross reactivity with other proteins.
Isotype	IgG
Form	Liquid
Concentration	1 mg/ml
Purification	The antibody was affinity-purified from rabbit antiserum by affinity-chromatography using epitope-specific immunogen.
Suggested Dilutions	IHC 1:50-200 ELISA 1:10000-20000 IF 1:50-200

Anti-Epiregulin EREG Antibody (A06692) Images



Immunohistochemical analysis of paraffin-embedded Human-liver, antibody was diluted at 1:100

Submit a product review to [Biocompare.com](https://www.biocompare.com)

Submit a review of this product to [Biocompare.com](https://www.biocompare.com) to receive a \$20 Amazon.com giftcard! Your reviews help your fellow scientists make the right decisions. Thank you for your contribution.



Anti-Epiregulin EREG Antibody

For Research Use Only. Not for use in diagnostic procedures.