

## Anti-EREG Antibody (C-term)

Catalog Number: A06692-1

### About EREG

EREG is a member of the epidermal growth factor family. EREG can function as a ligand of EGFR (epidermal growth factor receptor), as well as a ligand of most members of the ERBB (v-erb-b2 oncogene homolog) family of tyrosine-kinase receptors.

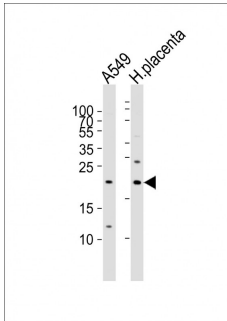
### Overview

Product Name	Anti-EREG Antibody (C-term)
Reactive Species	Human
Description	Boster Bio Anti-EREG Antibody (C-term) (Catalog # A06692-1). Tested in WB, IHC-P, Flow Cytometry application(s). This antibody reacts with Human.
Application	Flow Cytometry, IHC-P, WB
Clonality	Polyclonal
Formulation	Purified polyclonal antibody supplied in PBS with 0.09% (W/V) sodium azide.
Storage Instructions	Maintain refrigerated at 2-8°C for up to 2 weeks. For long-term storage, store at -20°C in small aliquots to prevent freeze-thaw cycles.
Host	Rabbit
Uniprot ID	O14944

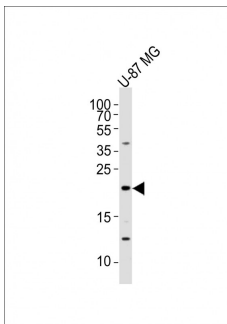
### Technical Details

Immunogen	This EREG antibody is generated from rabbits immunized with a KLH conjugated synthetic peptide between 137-165 amino acids from the C-terminal region of human EREG.
Predicted Reactive Species	Mouse, Xenopus
Isotype	Rabbit IgG
Purification	This antibody is purified through a protein A column, followed by peptide affinity purification.
Suggested Dilutions	WB: 1:1000 IHC-P: 1:10-1:50 FC: 1:25

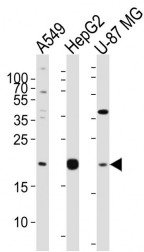
## Anti-EREG Antibody (C-term) (A06692-1) Images



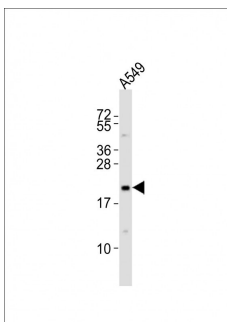
All lanes : Anti-EREG Antibody (C-term) at 1:1000 dilution  
Lane 1: A549 whole cell lysates  
Lane 2: human placenta lysates  
Lysates/proteins at 20 µg per lane.  
Secondary Goat Anti-Rabbit IgG, (H+L), Peroxidase conjugated at 1/10000 dilution  
Predicted band size : 19 kDa  
Blocking/Dilution buffer: 5% NFDm/TBST.



Anti-EREG Antibody (C-term) at 1:2000 dilution + U-87 MG whole cell lysates  
Lysates/proteins at 20 µg per lane.  
Secondary Goat Anti-Rabbit IgG, (H+L), Peroxidase conjugated at 1/10000 dilution  
Predicted band size : 19 kDa  
Blocking/Dilution buffer: 5% NFDm/TBST.

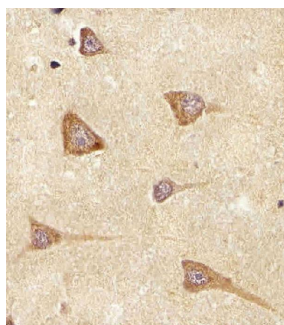
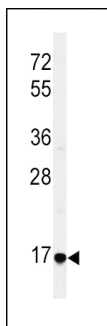


Western blot analysis of lysates from A549, HepG2, U-87 MG cell line (from left to right), using EREG Antibody (C-term). A06692-1 was diluted at 1:1000 at each lane. A goat anti-rabbit IgG H&L(HRP) at 1:10000 dilution was used as the secondary antibody. Lysates at 20ug per lane.

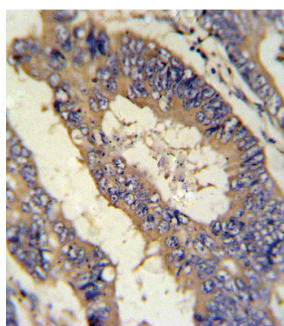


Anti-EREG Antibody (C-term) at 1:2000 dilution + A549 whole cell lysates  
Lysates/proteins at 20 µg per lane.  
Secondary Goat Anti-Rabbit IgG, (H+L), Peroxidase conjugated at 1/10000 dilution  
Predicted band size : 19 kDa  
Blocking/Dilution buffer: 5% NFDm/TBST.

Western blot analysis of EREG Antibody (C-term) in HepG2 cell line lysates (35ug/lane). EREG (arrow) was detected using the purified Pab.



A06692-1 staining EREG in Human brain tissue sections by Immunohistochemistry (IHC-P -paraformaldehyde-fixed, paraffin-embedded sections). Tissue was fixed with formaldehyde and blocked with 3% BSA for 0.5 hour at room temperature; antigen retrieval was by heat mediation with a citrate buffer (pH6). Samples were incubated with primary antibody (1/25) for 1 hour at 37°C. A undiluted biotinylated goat polyvalent antibody was used as the secondary antibody.



EREG Antibody (C-term) IHC analysis in formalin fixed and paraffin embedded colon carcinoma followed by peroxidase conjugation of the secondary antibody and DAB staining. This data demonstrates the use of the EREG Antibody (C-term) for immunohistochemistry. Clinical relevance has not been evaluated.

## Submit a product review to [Biocompare.com](https://www.biocompare.com)

Submit a review of this product to [Biocompare.com](https://www.biocompare.com) to receive a \$20 Amazon.com giftcard! Your reviews help your fellow scientists make the right decisions. Thank you for your contribution.



Anti-EREG Antibody (C-term)

For Research Use Only. Not for use in diagnostic procedures.