

Anti-MMS21 NSMCE2 Antibody

Catalog Number: A06693

About NSMCE2

MMS21, also known as NSE2, is a SUMO ligase that in combination with the SMC5/6 complex is required for the prevention of DNA damage induced apoptosis by facilitating DNA repair in human cells. MMS21-dependent sumoylation is integral and important to the cohesion mechanism and mitotic progression; this function appears to be independent of SMC6. MMS21 mediates SUMO attachment to various proteins such as SMC6L1 and TRAX, and possibly the cohesin components RAD21 and STAG2.

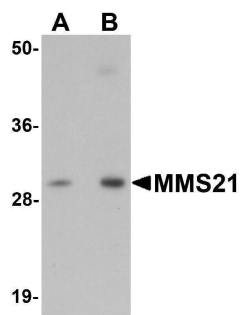
Overview

Product Name	Anti-MMS21 NSMCE2 Antibody
Reactive Species	Human, Mouse, Rat
Description	Boster Bio Anti-MMS21 NSMCE2 Antibody (Catalog # A06693). Tested in ELISA, WB applications. This antibody reacts with Human, Mouse, Rat.
Application	ELISA, WB
Clonality	Polyclonal
Formulation	MMS21 Antibody is supplied in PBS containing 0.02% sodium azide.
Storage Instructions	MMS21 antibody can be stored at 4°C for three months and -20°C, stable for up to one year. Avoid repeated freeze-thaw cycles. Antibodies should not be exposed to prolonged high temperatures.
Host	Rabbit
Uniprot ID	Q96MF7

Technical Details

Immunogen	MMS21 antibody was raised against a 15 amino acid synthetic peptide near the carboxy terminus of human MMS21. The immunogen is located within amino acids 170 - 220 of MMS21.
Predicted Reactive Species	Bovine
Isotype	IgG
Form	Liquid
Concentration	1 mg/mL
Purification	MMS21 Antibody is affinity chromatography purified via peptide column.
Suggested Dilutions	MMS21 antibody can be used for detection of MMS21 by Western blot at 0.5 - 1 ug/mL. Antibody validated: Western Blot in human samples. All other applications and species not yet tested. Optimal dilutions for each application should be determined by the researcher.

Anti-MMS21 NSMCE2 Antibody (A06693) Images



Western blot analysis of MMS21 in 293 cell lysate with MMS21 antibody at (A) 0.5 and (B) 1 ug/mL.

Submit a product review to Biocompare.com

Submit a review of this product to Biocompare.com to receive a \$20 Amazon.com giftcard! Your reviews help your fellow scientists make the right decisions. Thank you for your contribution.



Anti-MMS21 NSMCE2 Antibody

For Research Use Only. Not for use in diagnostic procedures.