

Anti-LEPRE1 Antibody (Center)

Catalog Number: A06697

About P3H1

Basement membrane-associated chondroitin sulfate proteoglycan (CSPG). Has prolyl 3-hydroxylase activity catalyzing the post-translational formation of 3-hydroxyproline in -Xaa-Pro- Gly- sequences in collagens, especially types IV and V. May be involved in the secretory pathway of cells. Has growth suppressive activity in fibroblasts.

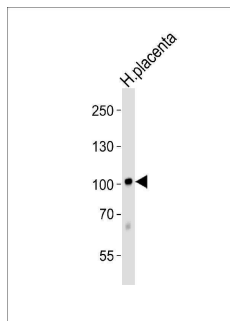
Overview

Product Name	Anti-LEPRE1 Antibody (Center)
Reactive Species	Human
Description	Boster Bio Anti-LEPRE1 Antibody (Center) (Catalog # A06697). Tested in WB application(s). This antibody reacts with Human.
Application	WB
Clonality	Polyclonal
Formulation	Purified polyclonal antibody supplied in PBS with 0.09% (W/V) sodium azide.
Storage Instructions	Maintain refrigerated at 2-8°C for up to 2 weeks. For long-term storage, store at -20°C in small aliquots to prevent freeze-thaw cycles.
Host	Rabbit
Uniprot ID	Q32P28

Technical Details

Immunogen	This LEPRE1 antibody is generated from a rabbit immunized with a KLH conjugated synthetic peptide between 499-533 amino acids from the Central region of human LEPRE1.
Predicted Reactive Species	Mouse, Rat
Isotype	Rabbit IgG
Purification	This antibody is purified through a protein A column, followed by peptide affinity purification.
Suggested Dilutions	WB: 1:1000

Anti-LEPRE1 Antibody (Center) (A06697) Images



Western blot analysis of lysate from human placenta tissue lysate, using LEPRE1 Antibody (Center). A06697 was diluted at 1:1000. A goat anti-rabbit IgG H&L (HRP) at 1:5000 dilution was used as the secondary antibody. Lysate at 35ug.

Submit a product review to Biocompare.com

Submit a review of this product to Biocompare.com to receive a \$20 Amazon.com giftcard! Your reviews help your fellow scientists make the right decisions. Thank you for your contribution.



Anti-LEPRE1 Antibody (Center)

For Research Use Only. Not for use in diagnostic procedures.