

Anti-Collagen alpha-1(XIII) chain COL13A1 Antibody

Catalog Number: A06702-1

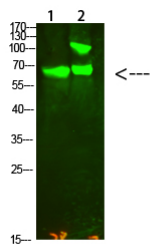
Overview

Product Name	Anti-Collagen alpha-1(XIII) chain COL13A1 Antibody
Reactive Species	Human, Mouse
Description	Boster Bio Anti-Collagen alpha-1 (XIII) chain COL13A1 Antibody catalog # A06702-1. Tested in ELISA, WB applications. This antibody reacts with Human, Mouse.
Application	ELISA, WB
Clonality	Polyclonal
Formulation	Liquid in PBS containing 50% glycerol, 0.5% stabilizing protein and 0.02% sodium azide. *This antibody is supplied in a stabilized formulation. Compatibility with conjugation reactions depends on the chemistry of the conjugation method used. For conjugation methods that are not compatible with the stabilizing components present in this formulation, a carrier-free antibody format is required.
Storage Instructions	Store at -20°C for one year. For short term storage and frequent use, store at 4°C for up to one month. Avoid repeated freeze-thaw cycles.
Host	Rabbit
Uniprot ID	Q5TAT6

Technical Details

Immunogen	Synthesized peptide derived from human COL13A1. at AA range: 41-90
Cross Reactivity	No cross reactivity with other proteins.
Isotype	IgG
Form	Liquid
Concentration	1 mg/ml
Purification	The antibody was affinity-purified from rabbit antiserum by affinity-chromatography using epitope-specific immunogen.
Suggested Dilutions	WB 1:500-2000 ELISA 1:10000-20000

Anti-Collagen alpha-1(XIII) chain COL13A1 Antibody (A06702-1) Images



Western Blot analysis of 1, Hela 2, Mouse-kidney cells using primary antibody diluted at 1:2000 (4°C overnight).
Secondary antibody: Goat Anti-rabbit IgG IRDye 800 (diluted at 1:5000, 25°C, 1 hour)

Submit a product review to Biocompare.com

Submit a review of this product to Biocompare.com to receive a \$20 Amazon.com giftcard! Your reviews help your fellow scientists make the right decisions. Thank you for your contribution.



Anti-Collagen alpha-1(XIII) chain COL13A1 Antibody

For Research Use Only. Not for use in diagnostic procedures.