

Anti-SIPA1L1 Antibody

Catalog Number: A06716

About SIPA1L1

Signal-induced proliferation associated-like protein 1 (SIPA1L1) is a member of the SIPA1 family of RapGAPs. SIPA1L1 was initially identified as a binding partner and degradation target of the E6 oncoprotein of high-risk papillomaviruses. Recently, it was discovered that Casein kinase I epsilon (CKIε), a Wnt-regulated kinase that regulates Wnt/b-catenin signaling, also can bind to the carboxy-terminus of SIPA1L1. CKIε phosphorylates SIPA1L1, thereby reducing its stability and alleviating its inhibition of Rap1, a protein required for Wnt8/CKIε-mediated gastrulation during embryogenesis, suggesting SIPA1L1 plays important roles in embryo development as well as control of cell proliferation.

Overview

Product Name	Anti-SIPA1L1 Antibody
Reactive Species	Human, Mouse, Rat
Description	Boster Bio Anti-SIPA1L1 Antibody (Catalog # A06716). Tested in ELISA, WB, IHC-P, IF applications. This antibody reacts with Human, Mouse, Rat.
Application	ELISA, IF, IHC-P, WB
Clonality	Polyclonal
Formulation	SIPA1L1 Antibody is supplied in PBS containing 0.02% sodium azide.
Storage Instructions	SIPA1L1 antibody can be stored at 4°C for three months and -20°C, stable for up to one year. Avoid repeated freeze-thaw cycles. Antibodies should not be exposed to prolonged high temperatures.
Host	Rabbit
Uniprot ID	O43166

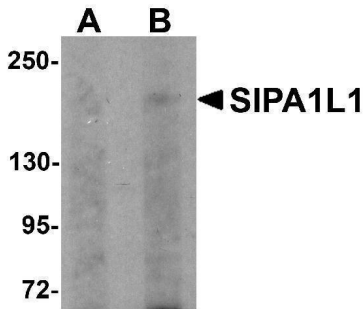
Technical Details

Immunogen	SIPA1L1 antibody was raised against a 16 amino acid synthetic peptide from near the amino terminus of human SIPA1L1. The immunogen is located within amino acids 40 - 90 of SIPA1L1.
Predicted Reactive Species	Bovine
Isotype	IgG
Form	Liquid
Concentration	1 mg/mL
Purification	SIPA1L1 Antibody is affinity chromatography purified via peptide column.
Suggested Dilutions	SIPA1L1 antibody can be used for detection of SIPA1L1 by Western blot at 0.5 - 1 ug/mL. Antibody can also be used for immunohistochemistry starting at 5 ug/mL. For immunofluorescence start at 20

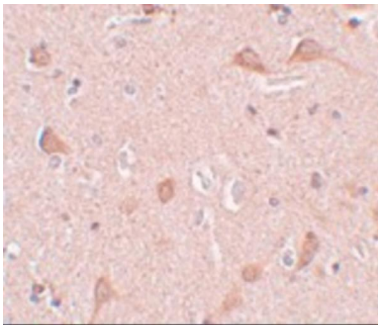
ug/mL.

Antibody validated: Western Blot in rat samples; Immunohistochemistry in human samples and Immunofluorescence in human samples. All other applications and species not yet tested. Optimal dilutions for each application should be determined by the researcher.

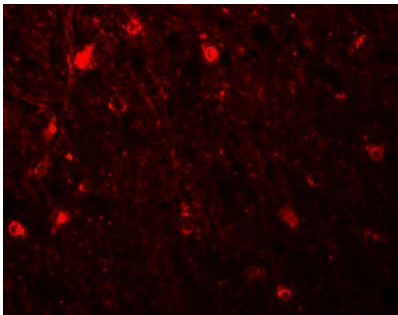
Anti-SIPA1L1 Antibody (A06716) Images



Western blot analysis of SIPA1L1 in rat brain tissue lysate with SIPA1L1 antibody at (A) 0.5 and (B) 1 ug/mL.



Immunohistochemistry of SIPA1L1 in human brain tissue with SIPA1L1 antibody at 5 ug/mL.



Immunofluorescence of SIPA1L1 in human brain tissue with SIPA1L1 antibody at 20 ug/mL.

Submit a product review to [Biocompare.com](https://www.biocompare.com)

Submit a review of this product to [Biocompare.com](https://www.biocompare.com) to receive a \$20 Amazon.com giftcard! Your reviews help your fellow scientists make the right decisions. Thank you for your contribution.



Anti-SIPA1L1 Antibody

For Research Use Only. Not for use in diagnostic procedures.