

Anti-Histone H1 HIST1H1B Antibody

Catalog Number: A06717

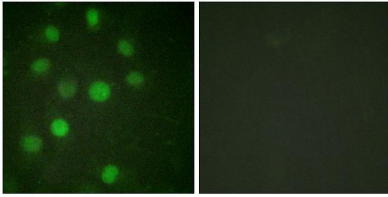
Overview

Product Name	Anti-Histone H1 HIST1H1B Antibody
Reactive Species	Human, Mouse
Description	Boster Bio Anti-Histone H1 HIST1H1B Antibody catalog # A06717. Tested in WB, IHC, IF, ELISA applications. This antibody reacts with Human, Mouse.
Application	ELISA, IF, IHC, WB
Clonality	Polyclonal
Formulation	Liquid in PBS containing 50% glycerol, 0.5% stabilizing protein and 0.02% sodium azide. *This antibody is supplied in a stabilized formulation. Compatibility with conjugation reactions depends on the chemistry of the conjugation method used. For conjugation methods that are not compatible with the stabilizing components present in this formulation, a carrier-free antibody format is required.
Storage Instructions	Store at -20°C for one year. For short term storage and frequent use, store at 4°C for up to one month. Avoid repeated freeze-thaw cycles.
Host	Rabbit
Uniprot ID	P16401

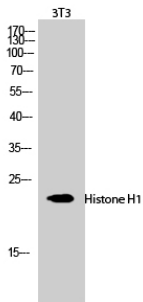
Technical Details

Immunogen	The antiserum was produced against synthesized peptide derived from human Histone H1. AA range:1-50
Isotype	IgG
Form	Liquid
Concentration	1 mg/ml
Purification	Immunogen affinity purified
Suggested Dilutions	WB 1:500-1:2000 IHC 1:100-1:300 IF 1:200-1:1000 ELISA 1:20000

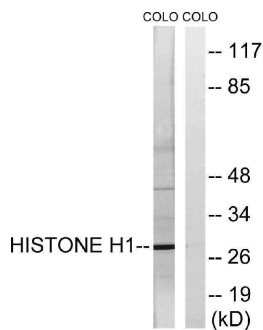
Anti-Histone H1 HIST1H1B Antibody (A06717) Images



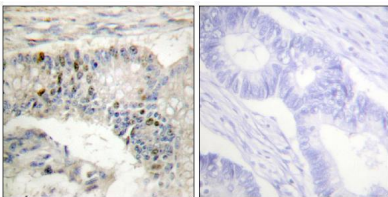
Immunofluorescence analysis of HUVEC cells, using Histone H1 Antibody. The picture on the right is blocked with the synthesized peptide.



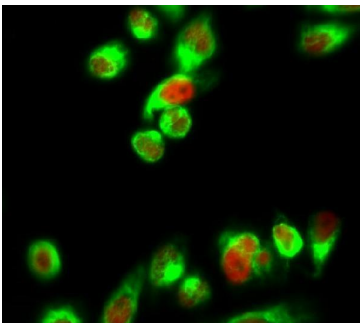
Western Blot analysis of 3T3 cells using Histone H1 Polyclonal Antibody diluted at 1:1000 cells nucleus extracted by Minute TM Cytoplasmic and Nuclear Fractionation kit .



Western blot analysis of lysates from COLO cells, using Histone H1 Antibody. The lane on the right is blocked with the synthesized peptide.



Immunohistochemistry analysis of paraffin-embedded human colon carcinoma tissue, using Histone H1 Antibody. The picture on the right is blocked with the synthesized peptide.



Immunofluorescence analysis of HeLa cell. 1, Histone H1 Polyclonal Antibody (red) was diluted at 1:200 (4° overnight). alpha-SMA Monoclonal Antibody (6A12) (green) was diluted at 1:200 (4° overnight). 2, Goat Anti Rabbit Alexa Fluor 594 was diluted at 1:1000 (room temperature, 50min). Goat Anti Mouse Alexa Fluor 488 was diluted at 1:1000 (room temperature, 50min).

1 Publications Citing This Product

1. PubMed ID: 24503896, Role of endoplasmic reticulum stress in apoptosis of differentiated mouse podocytes induced by high glucose

Visit bosterbio.com/anti-histone-h1-antibody-a06717-boster.html to see all 1 publications.

Submit a product review to Biocompare.com

Submit a review of this product to Biocompare.com to receive a \$20 Amazon.com giftcard! Your reviews help your fellow scientists make the right decisions. Thank you for your contribution.



Anti-Histone H1 HIST1H1B Antibody

For Research Use Only. Not for use in diagnostic procedures.