

Anti-PLA2G1B Antibody

Catalog Number: A06738-2

About PLA2G1B

PLA2G1B is a secreted member of the phospholipase A2 (PLA2) class of enzymes, which is produced by the pancreatic acinar cells. PLA2G1B catalyzes the hydrolysis of the sn-2 position of membrane glycerophospholipids to release arachidonic acid (AA) and lysophospholipids.

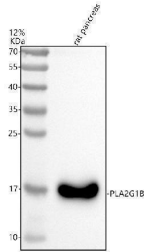
Overview

| | |
|----------------------|--|
| Product Name | Anti-PLA2G1B Antibody |
| Reactive Species | Human, Mouse |
| Description | Boster Bio Anti-PLA2G1B Antibody catalog # A06738-2. Tested in WB, IHC, IF, ELISA applications. This antibody reacts with Human, Mouse. |
| Application | ELISA, IF, IHC, WB |
| Clonality | Polyclonal |
| Formulation | 500 ug/ml antibody with PBS, 0.02% NaN ₃ , 1 mg stabilizing protein and 50% glycerol This antibody is supplied in a stabilized formulation. Compatibility with conjugation reactions depends on the chemistry of the conjugation method used. For conjugation methods that are not compatible with the stabilizing components present in this formulation, a carrier-free antibody format is required. |
| Storage Instructions | 12 months from date of receipt at -20°C as supplied. 6 months at 2 to 8°C after reconstitution. Avoid repeated freezing and thawing. |
| Host | Rabbit |
| Uniprot ID | P04054 |

Technical Details

| | |
|---------------------|---|
| Immunogen | E.coli-derived human PLA2G1B recombinant protein (Position: L3-Q68). |
| Form | Liquid |
| Concentration | 500 ug/ml |
| Purification | Immunogen affinity purified. |
| Suggested Dilutions | Western blot, 1:500-2000 Immunohistochemistry, 1:50-400 Immunofluorescence, 1:50-400 ELISA, 1:100-1000 |

Anti-PLA2G1B Antibody (A06738-2) Images



Western blot analysis of PLA2G1B using anti-PLA2G1B antibody (A06738-2). Electrophoresis was performed on a 12% SDS-PAGE gel at 80V (Stacking gel) / 120V (Resolving gel) for 2 hours. The sample well of each lane was loaded with 30 ug of sample under reducing conditions. Lane 1: rat pancreas tissue lysates. After electrophoresis, proteins were transferred to a nitrocellulose membrane at 150 mA for 50-90 minutes. Blocked the membrane with 5% non-fat milk/TBS for 1.5 hour at RT. The membrane was incubated with rabbit anti-PLA2G1B antigen affinity purified polyclonal antibody (A06738-2) at 1:1000 overnight at 4°C, then washed with TBS-0.1% Tween 3 times with 5 minutes each and probed with a goat anti-rabbit IgG-HRP secondary antibody at a dilution of 1:5000 for 1.5 hour at RT. The signal is developed using an ECL Plus Western Blotting Substrate (Catalog # AR1196-200) with Tanon 5200 system. A specific band was detected for PLA2G1B at approximately 16 kDa. The expected band size for PLA2G1B is at 16 kDa.

Submit a product review to Biocompare.com

Submit a review of this product to Biocompare.com to receive a \$20 Amazon.com giftcard! Your reviews help your fellow scientists make the right decisions. Thank you for your contribution.



Anti-PLA2G1B Antibody

For Research Use Only. Not for use in diagnostic procedures.