

## Anti-V-ATPase S1 ATP6AP1 Antibody

Catalog Number: A06742S1

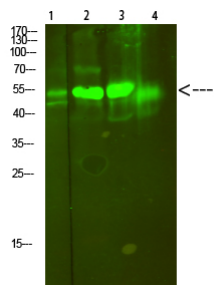
### Overview

Product Name	Anti-V-ATPase S1 ATP6AP1 Antibody
Reactive Species	Human, Mouse, Rat
Description	Boster Bio Anti-V-ATPase S1 ATP6AP1 Antibody catalog # A06742S1. Tested in ELISA, WB applications. This antibody reacts with Human, Mouse, Rat.
Application	ELISA, WB
Clonality	Polyclonal
Formulation	Liquid in PBS containing 50% glycerol, 0.5% stabilizing protein and 0.02% sodium azide. This antibody is supplied in a stabilized formulation. Compatibility with conjugation reactions depends on the chemistry of the conjugation method used. For conjugation methods that are not compatible with the stabilizing components present in this formulation, a carrier-free antibody format is required.
Storage Instructions	Store at -20°C for one year. For short term storage and frequent use, store at 4°C for up to one month. Avoid repeated freeze-thaw cycles.
Host	Rabbit
Uniprot ID	Q15904

### Technical Details

Immunogen	Synthesized peptide derived from human V-ATPase S1. at AA range: 421-470
Isotype	IgG
Form	Liquid
Concentration	1 mg/ml
Purification	The antibody was affinity-purified from rabbit antiserum by affinity-chromatography using epitope-specific immunogen.
Suggested Dilutions	WB 1:500-2000 ELISA 1:10000-20000

## Anti-V-ATPase S1 ATP6AP1 Antibody (A06742S1) Images



Western Blot analysis of 1, mouse-lung 2, mouse-brain 3, mouse-spleen 4, mouse-kidney cells using primary antibody diluted at 1:500 (4°C overnight). Secondary antibody:Goat Anti-rabbit IgG IRDye 800 ( diluted at 1:5000, 25°C, 1 hour)

### Submit a product review to Biocompare.com

Submit a review of this product to Biocompare.com to receive a \$20 Amazon.com giftcard! Your reviews help your fellow scientists make the right decisions. Thank you for your contribution.



Anti-V-ATPase S1 ATP6AP1 Antibody

For Research Use Only. Not for use in diagnostic procedures.