

## Anti-Hormone-sensitive lipase Lipe Antibody

Catalog Number: A06762

### About LIPE

Although initially described as an adipocyte-specific triacylglycerol lipase, Lipe (also known as hormone-specific lipase or HSL) is expressed in multiple tissues and cell lines. It plays multiple roles in lipid metabolism, including hormone-stimulated lipolysis in adipose tissue and the hydrolysis of cholesterol esters. Lipe is expressed as a long and a short form, generated by use of alternative translational start codons. The long form is expressed in steroidogenic tissues such as testis, where it converts cholesterol esters to free cholesterol for steroid hormone production. The short form is expressed in adipose tissue, among others, where it hydrolyzes stored triglycerides to free fatty acids. Recently, it was observed that the lack of Lipe in genetically obese leptin-null mice inhibited obesity and adipogenesis, suggesting that Lipe plays a major role in adipocyte proliferation.

### Overview

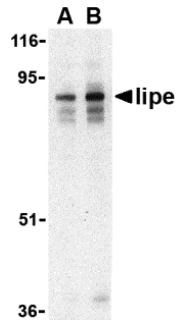
Product Name	Anti-Hormone-sensitive lipase Lipe Antibody
Reactive Species	Human, Mouse, Rat
Description	Boster Bio Anti-Hormone-sensitive lipase Lipe Antibody (Catalog # A06762). Tested in ELISA, WB, IHC-P, IF applications. This antibody reacts with Human, Mouse, Rat.
Application	ELISA, IF, IHC-P, WB
Clonality	Polyclonal
Formulation	Lipe Antibody is supplied in PBS containing 0.02% sodium azide.
Storage Instructions	Lipe antibody can be stored at 4°C for three months and -20°C, stable for up to one year. Avoid repeated freeze-thaw cycles. Antibodies should not be exposed to prolonged high temperatures.
Host	Rabbit
Uniprot ID	Q05469

### Technical Details

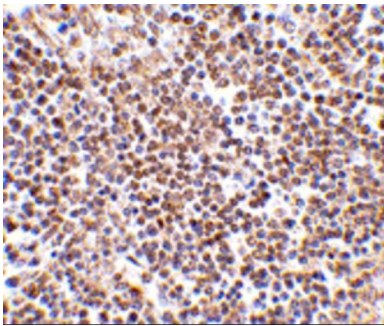
Immunogen	Lipe antibody was raised against a 14 amino acid synthetic peptide from near the carboxy terminus of human Lipe. The immunogen is located within amino acids 920 - 970 of Lipe.
Predicted Reactive Species	Bovine, Pig
Cross Reactivity	Multiple isoforms of Lipe are known to exist.
Isotype	IgG
Form	Liquid
Concentration	1 mg/mL

Purification	Lipe Antibody is affinity chromatography purified via peptide column.
Suggested Dilutions	Lipe antibody can be used for detection of Lipe by Western blot at 0.5 - 1 ug/mL. Antibody can also be used for immunohistochemistry starting at 2.5 ug/mL. For immunofluorescence start at 20 ug/mL. Antibody validated: Western Blot in human samples; Immunohistochemistry in human samples and Immunofluorescence in human samples. All other applications and species not yet tested. Optimal dilutions for each application should be determined by the researcher.

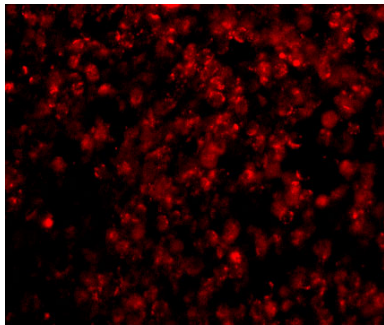
## Anti-Hormone-sensitive lipase Lipe Antibody (A06762) Images



Western blot analysis of Lipe in human lymph node tissue lysate with Lipe antibody at (A) 0.5 and (B) 1 ug/mL.



Immunohistochemistry of lipe in human lymph node tissue with lipe antibody at 2.5 ug/mL.



Immunofluorescence of Lipe in Human Lymph Node cells with Lipe antibody at 20 ug/mL.

### Submit a product review to [Biocompare.com](https://www.biocompare.com)

Submit a review of this product to [Biocompare.com](https://www.biocompare.com) to receive a \$20 Amazon.com giftcard! Your reviews help your fellow scientists make the right decisions. Thank you for your contribution.



Anti-Hormone-sensitive lipase Lipe Antibody

For Research Use Only. Not for use in diagnostic procedures.