

Anti-Centromere protein C CENPC Antibody

Catalog Number: A06766-1

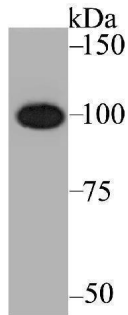
Overview

Product Name	Anti-Centromere protein C CENPC Antibody
Reactive Species	Human
Description	Boster Bio Anti-Centromere protein C CENPC Antibody catalog # A06766-1. Tested in WB,ICC,IF,IHC,Flow Cytometry,IP applications. This antibody reacts with Human.
Application	Flow Cytometry, IP, IF, IHC, ICC, WB
Clonality	Polyclonal
Formulation	Rabbit IgG, 1mg/ml in PBS with 0.02% sodium azide, 50% glycerol, pH7.2
Storage Instructions	Store at -20°C for one year. For short term storage and frequent use, store at 4°C for up to one month. Avoid repeated freeze-thaw cycles.
Host	Rabbit
Uniprot ID	Q03188

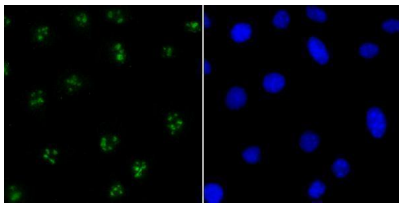
Technical Details

Immunogen	Recombinant protein within human CENPC aa 400-600.
Isotype	IgG
Form	Liquid
Concentration	1 mg/ml
Purification	ProA affinity purified
Suggested Dilutions	WB: 1:500-1:2,000 ICC: 1:50-1:200 IHC: 1:50-1:200 FC: 1:50-1:200 IP: 1:10-1:50

Anti-Centromere protein C CENPC Antibody (A06766-1) Images



Western blot analysis of CENPC on K562 cell lysate using anti-CENPC antibody at 1/1,000 dilution.



ICC staining CENPC in SH-SY-5Y cells (green). The nuclear counter stain is DAPI (blue). Cells were fixed in paraformaldehyde, permeabilised with 0.25% Triton X100/PBS.

Submit a product review to [Biocompare.com](https://www.biocompare.com)

Submit a review of this product to [Biocompare.com](https://www.biocompare.com) to receive a \$20 Amazon.com giftcard! Your reviews help your fellow scientists make the right decisions. Thank you for your contribution.



Anti-Centromere protein C CENPC Antibody

For Research Use Only. Not for use in diagnostic procedures.