

Anti-Myeloid leukemia factor 1 MLF1 Antibody

Catalog Number: A06772

About MLF1

Involved in lineage commitment of primary hemopoietic progenitors by restricting erythroid formation and enhancing myeloid formation. Interferes with erythropoietin-induced erythroid terminal differentiation by preventing cells from exiting the cell cycle through suppression of CDKN1B/p27Kip1 levels. Suppresses RFWD2/COP1 activity via CSN3 which activates p53 and induces cell cycle arrest. Binds DNA and affects the expression of a number of genes so may function as a transcription factor in the nucleus.

Yoneda-Kato N., Oncogene 12:265-275(1996) [PubMed: 8570204].

Hanissian S.H., Oncogene 23:3700-3707(2004) [PubMed: 15116101].

Yoneda-Kato N., EMBO J. 24:1739-1749(2005) [PubMed: 15861129].

Overview

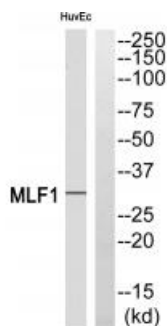
Product Name	Anti-Myeloid leukemia factor 1 MLF1 Antibody
Reactive Species	Human, Mouse
Description	Boster Bio Anti-Myeloid leukemia factor 1 MLF1 Antibody (Catalog # A06772). Tested in WB applications. This antibody reacts with Human, Mouse.
Application	WB
Clonality	Polyclonal
Formulation	Rabbit IgG in phosphate buffered saline (without Mg ²⁺ and Ca ²⁺), pH 7.4, 150mM NaCl, 0.02% sodium azide and 50% glycerol.
Storage Instructions	Store at -20°C for one year. For short term storage and frequent use, store at 4°C for up to one month. Avoid repeated freeze-thaw cycles.
Host	Rabbit
Uniprot ID	P58340

Technical Details

Immunogen	Synthesized peptide derived from internal of human MLF1.
Predicted Reactive Species	Chimpanzee, Drosophila, Macaque
Isotype	IgG
Form	Liquid
Concentration	1 mg/ml

Purification	The antibody was affinity-purified from rabbit antiserum by affinity-chromatography using epitope-specific immunogen.
Suggested Dilutions	<p>Dilute the sample so that the expected range of concentrations fall within the detection range of this kit.</p> <p>If the expected range of concentration is unknown, a pilot test should be conducted to decide the optimal dilution ratio for your samples.</p> <p>Some PubMed article(s) citing the expression level of this target are as follows:</p> <p>Boster Bio's internal QC testing used:</p> <p>Western blotting: 1:500~1:3000</p>

Anti-Myeloid leukemia factor 1 MLF1 Antibody (A06772) Images



Western blot analysis of extracts from HUVEC cells, using MLF1 antibody A06772.

Submit a product review to Biocompare.com

Submit a review of this product to Biocompare.com to receive a \$20 Amazon.com giftcard! Your reviews help your fellow scientists make the right decisions. Thank you for your contribution.



Anti-Myeloid leukemia factor 1 MLF1 Antibody