

Anti-Myeloid leukemia factor 1 MLF1 Antibody

Catalog Number: A06772-1

About MLF1

Involved in lineage commitment of primary hemopoietic progenitors by restricting erythroid formation and enhancing myeloid formation. Interferes with erythropoietin-induced erythroid terminal differentiation by preventing cells from exiting the cell cycle through suppression of CDKN1B/p27Kip1 levels. Suppresses RFWD2/COP1 activity via CSN3 which activates p53 and induces cell cycle arrest. Binds DNA and affects the expression of a number of genes so may function as a transcription factor in the nucleus.

Yoneda-Kato N., Oncogene 12:265-275(1996) [PubMed: 8570204].

Hanissian S.H., Oncogene 23:3700-3707(2004) [PubMed: 15116101].

Yoneda-Kato N., EMBO J. 24:1739-1749(2005) [PubMed: 15861129].

Overview

Product Name	Anti-Myeloid leukemia factor 1 MLF1 Antibody
Reactive Species	Human, Mouse, Rat
Description	Boster Bio Anti-Myeloid leukemia factor 1 MLF1 Antibody catalog # A06772-1. Tested in WB applications. This antibody reacts with Human,Mouse,Rat.
Application	WB
Clonality	Polyclonal
Formulation	Rabbit IgG, 1mg/ml in PBS with 0.02% sodium azide, 50% glycerol, pH7.2
Storage Instructions	Store at -20°C for one year. For short term storage and frequent use, store at 4°C for up to one month. Avoid repeated freeze-thaw cycles.
Host	Rabbit
Uniprot ID	P58340

Technical Details

Immunogen	Synthesized peptide derived from internal of human MLF1.
Predicted Reactive Species	Chimpanzee, Drosophila, Macaque
Isotype	IgG
Form	Liquid
Concentration	1 mg/ml
Purification	The antibody was affinity-purified from rabbit antiserum by affinity-chromatography using epitope-

specific immunogen and the purity is > 95% (by SDS-PAGE).

Suggested Dilutions

Dilute the sample so that the expected range of concentrations fall within the detection range of this kit.

If the expected range of concentration is unknown, a pilot test should be conducted to decide the optimal dilution ratio for your samples.

Some PubMed article(s) citing the expression level of this target are as follows:

Boster Bio's internal QC testing used:

WB: 1:500-1:1000

Anti-Myeloid leukemia factor 1 MLF1 Antibody (A06772-1) Images

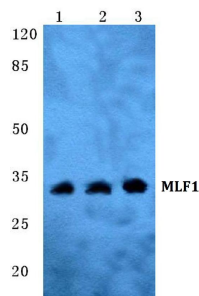


Figure 1. Western blotting validation for Anti-Myeloid leukemia factor 1 MLF1 Antibody A06772-1

Western blot (WB) analysis of MLF1 polyclonal antibody at 1:500 dilution

Lane1:Hela cell lysate

Lane2:sp2/0 cell lysate

Lane3:H9C2 cell lysate

Electrophoresis was performed on a SDS-PAGE gel. To determine SDS-PAGE gel concentration

Submit a product review to Biocompare.com

Submit a review of this product to Biocompare.com to receive a \$20 Amazon.com giftcard! Your reviews help your fellow scientists make the right decisions. Thank you for your contribution.



Anti-Myeloid leukemia factor 1 MLF1 Antibody