

Anti-Inhibin beta-A INHBA Antibody

Catalog Number: A06777

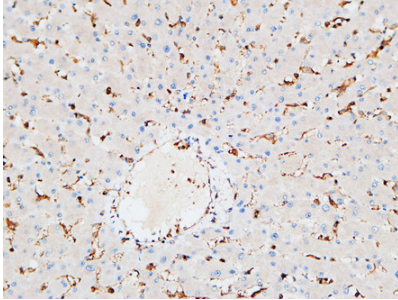
Overview

Product Name	Anti-Inhibin beta-A INHBA Antibody
Reactive Species	Human, Mouse, Rat
Description	Boster Bio Anti-Inhibin beta-A INHBA Antibody catalog # A06777. Tested in WB, IHC, IF, ELISA applications. This antibody reacts with Human, Mouse, Rat.
Application	ELISA, IF, IHC, WB
Clonality	Polyclonal
Formulation	Liquid in PBS containing 50% glycerol, 0.5% stabilizing protein and 0.02% sodium azide. This antibody is supplied in a stabilized formulation. Compatibility with conjugation reactions depends on the chemistry of the conjugation method used. For conjugation methods that are not compatible with the stabilizing components present in this formulation, a carrier-free antibody format is required.
Storage Instructions	Store at -20°C for one year. For short term storage and frequent use, store at 4°C for up to one month. Avoid repeated freeze-thaw cycles.
Host	Rabbit
Uniprot ID	P08476

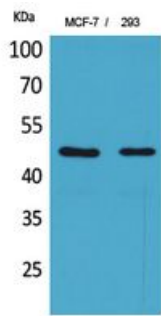
Technical Details

Immunogen	The antiserum was produced against synthesized peptide derived from the C-terminal region of human INHBA. AA range:377-426
Isotype	IgG
Form	Liquid
Concentration	1 mg/ml
Purification	Immunogen affinity purified
Suggested Dilutions	WB 1:500-1:2000 IHC: 1:100-1:300 ELISA 1:20000 IF 1:50-200

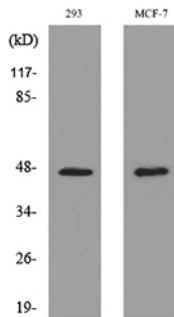
Anti-Inhibin beta-A INHBA Antibody (A06777) Images



Immunohistochemical analysis of paraffin-embedded Human liver. 1, Antibody was diluted at 1:200 (4° overnight). 2, High-pressure and temperature EDTA, pH8.0 was used for antigen retrieval. 3, Secondary antibody was diluted at 1:200 (room temperature, 30min).



Western Blot analysis of MCF-7, 293 cells using Inhibin beta-A Polyclonal Antibody. Secondary antibody was diluted at 1:20000



Western blot analysis of lysate from 293, MCF-7 cells, using INHBA Antibody.

Submit a product review to [Biocompare.com](https://www.biocompare.com)

Submit a review of this product to [Biocompare.com](https://www.biocompare.com) to receive a \$20 Amazon.com giftcard! Your reviews help your fellow scientists make the right decisions. Thank you for your contribution.



Anti-Inhibin beta-A INHBA Antibody

For Research Use Only. Not for use in diagnostic procedures.