

Anti-SLC38A3 Antibody

Catalog Number: A06782-2

About SLC38A3

Enables L-amino acid transmembrane transporter activity. Involved in amino acid transport. Located in plasma membrane.

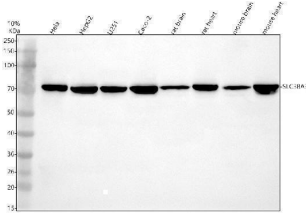
Overview

| | |
|----------------------|--|
| Product Name | Anti-SLC38A3 Antibody |
| Reactive Species | Human, Mouse, Rat |
| Description | Boster Bio Anti-SLC38A3 Antibody catalog # A06782-2. Tested in WB, IHC, ICC, IF, IP, Flow Cytometry, ELISA applications. This antibody reacts with Human, Mouse, Rat. |
| Application | ELISA, Flow Cytometry, IP, IF, IHC, ICC, WB |
| Clonality | Polyclonal |
| Formulation | 500 ug/ml antibody with PBS, 0.02% NaN ₃ , 1 mg stabilizing protein and 50% glycerol This antibody is supplied in a stabilized formulation. Compatibility with conjugation reactions depends on the chemistry of the conjugation method used. For conjugation methods that are not compatible with the stabilizing components present in this formulation, a carrier-free antibody format is required. |
| Storage Instructions | 12 months from date of receipt at -20°C as supplied. 6 months at 2 to 8°C after reconstitution. Avoid repeated freezing and thawing. |
| Host | Rabbit |
| Uniprot ID | Q99624 |

Technical Details

| | |
|---------------------|---|
| Immunogen | E.coli-derived human SLC38A3 recombinant protein (Position: M1-L195). |
| Form | Liquid |
| Concentration | 500 ug/ml |
| Purification | Immunogen affinity purified. |
| Suggested Dilutions | Western blot, 1:500-2000 Immunohistochemistry, 1:50-400 Immunocytochemistry/Immunofluorescence, 1:50-400 Immunoprecipitation, 1:50 Flow Cytometry (Fixed), 1-3ug/1x10 ⁶ cells ELISA, 1:100-1000 |

Anti-SLC38A3 Antibody (A06782-2) Images



Western blot analysis of SLC38A3 using anti-SLC38A3 antibody (A06782-2). Electrophoresis was performed on a 10% SDS-PAGE gel at 80V (Stacking gel) / 120V (Resolving gel) for 2 hours. The sample well of each lane was loaded with 30 ug of sample under reducing conditions. Lane 1: human HeLa whole cell lysates, Lane 2: human HepG2 whole cell lysates, Lane 3: human U251 whole cell lysates, Lane 4: human Caco-2 whole cell lysates, Lane 5: rat brain tissue lysates, Lane 6: rat heart tissue lysates, Lane 7: mouse brain tissue lysates, Lane 8: mouse heart tissue lysates. After electrophoresis, proteins were transferred to a nitrocellulose membrane at 150 mA for 50-90 minutes. Blocked the membrane with 5% non-fat milk/TBS for 1.5 hour at RT. The membrane was incubated with rabbit anti-SLC38A3 antigen affinity purified polyclonal antibody (A06782-2) at 1:1000 overnight at 4°C, then washed with TBS-0.1%Tween 3 times with 5 minutes each and probed with a goat anti-rabbit IgG-HRP secondary antibody at a dilution of 1:5000 for 1.5 hour at RT. The signal is developed using an ECL Plus Western Blotting Substrate (Catalog # AR1196-200) with Tanon 5200 system. A specific band was detected for SLC38A3 at approximately 70 kDa. The expected band size for SLC38A3 is at 56 kDa.

Submit a product review to [Biocompare.com](https://www.biocompare.com)

Submit a review of this product to [Biocompare.com](https://www.biocompare.com) to receive a \$20 Amazon.com giftcard! Your reviews help your fellow scientists make the right decisions. Thank you for your contribution.



Anti-SLC38A3 Antibody

For Research Use Only. Not for use in diagnostic procedures.