

Anti-APBA2 Antibody

Catalog Number: A06783-1

About APBA2

APBA2, a member of the X11 protein family, is a phosphotyrosine-binding domain protein and is a neuronal adapter protein that interacts with amyloid precursor protein (APP) and neuritic plaques in the brains of patients with Alzheimer's disease. It stabilizes APP and inhibits production of proteolytic APP fragments including the Aβ peptide that is deposited in the brains of Alzheimer's disease patients. APBA2 is believed to be involved in signal transduction processes and is also regarded as a putative vesicular trafficking protein in the brain that can form a complex with the potential to couple synaptic vesicle exocytosis to neuronal cell adhesion. Recent reports suggest that it may also be a candidate gene for autism.

Overview

Product Name	Anti-APBA2 Antibody
Reactive Species	Human
Description	Boster Bio Anti-APBA2 Antibody (Catalog # A06783-1). Tested in ELISA, WB, IHC-P, IF applications. This antibody reacts with Human.
Application	ELISA, IF, IHC-P, WB
Clonality	Polyclonal
Formulation	APBA2 Antibody is supplied in PBS containing 0.02% sodium azide.
Storage Instructions	APBA2 antibody can be stored at 4°C for three months and -20°C, stable for up to one year. Avoid repeated freeze-thaw cycles. Antibodies should not be exposed to prolonged high temperatures.
Host	Rabbit
Uniprot ID	Q99767

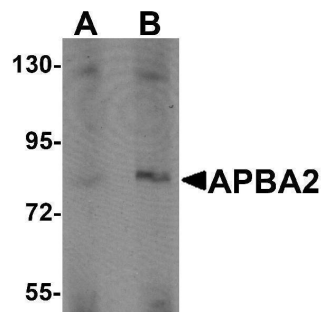
Technical Details

Immunogen	APBA2 antibody was raised against an 18 amino acid synthetic peptide near the center of human APBA2. The immunogen is located within amino acids 290 - 340 of APBA2.
Predicted Reactive Species	Mouse, Rat
Isotype	IgG
Form	Liquid
Concentration	1 mg/mL
Purification	APBA2 Antibody is affinity chromatography purified via peptide column.
Suggested Dilutions	APBA2 antibody can be used for detection of APBA2 by Western blot at 1 - 2 ug/mL. Antibody can also be used for immunohistochemistry starting at 10 ug/mL. For immunofluorescence start at 20

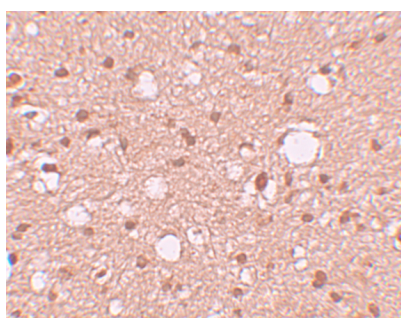
ug/mL.

Antibody validated: Western Blot in human samples; Immunohistochemistry in human samples and Immunofluorescence in human samples. All other applications and species not yet tested. Optimal dilutions for each application should be determined by the researcher.

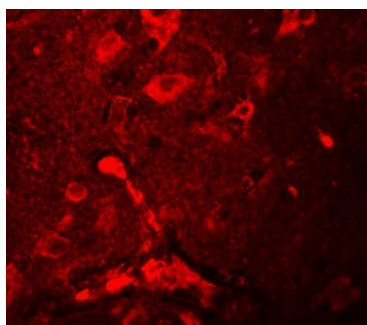
Anti-APBA2 Antibody (A06783-1) Images



Western blot analysis of APBA2 in human brain tissue lysate with APBA2 antibody at (A) 1 and (B) 2 ug/mL.



Immunohistochemistry of APBA2 in human brain tissue with APBA2 antibody at 10 ug/mL.



Immunofluorescence of APBA2 in human brain tissue with APBA2 antibody at 20 ug/mL.

Submit a product review to [Biocompare.com](https://www.biocompare.com)

Submit a review of this product to [Biocompare.com](https://www.biocompare.com) to receive a \$20 Amazon.com giftcard! Your reviews help your fellow scientists make the right decisions. Thank you for your contribution.



Anti-APBA2 Antibody

For Research Use Only. Not for use in diagnostic procedures.