

## Anti-Cytokeratin 15/KRT15 Antibody

Catalog Number: A06791-4

### About KRT15

Keratins are a large family of proteins that form the intermediate filament cytoskeleton of epithelial cells, which are classified into two major sequence types. Type I keratins are a group of acidic intermediate filament proteins, including K9-K23, and the hair keratins Ha1-Ha8. Type II keratins are the basic or neutral counterparts to the acidic type I keratins, including K1-K8, and the hair keratins, Hb1-Hb6. Keratin 15 is a type I cytokeratin. It is found in some progenitor basal cells within complex epithelia.

### Overview

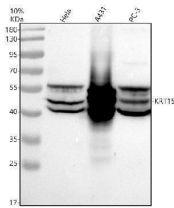
Product Name	Anti-Cytokeratin 15/KRT15 Antibody
Reactive Species	Human, Mouse, Rat
Description	Boster Bio Anti-Cytokeratin 15/KRT15 Antibody catalog # A06791-4. Tested in WB, IHC, IP, Flow Cytometry, ELISA applications. This antibody reacts with Human, Mouse, Rat.
Application	ELISA, Flow Cytometry, IP, IHC, WB
Clonality	Polyclonal
Formulation	500 ug/ml antibody with PBS, 0.02% NaN <sub>3</sub> , 1 mg stabilizing protein and 50% glycerol This antibody is supplied in a stabilized formulation. Compatibility with conjugation reactions depends on the chemistry of the conjugation method used. For conjugation methods that are not compatible with the stabilizing components present in this formulation, a carrier-free antibody format is required.
Storage Instructions	12 months from date of receipt at -20°C as supplied. 6 months at 2 to 8°C after reconstitution. Avoid repeated freezing and thawing.
Host	Rabbit
Uniprot ID	P19012

### Technical Details

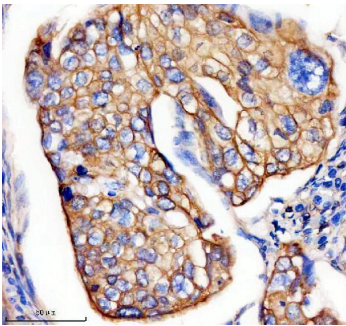
Immunogen	E.coli-derived human KRT15 recombinant protein (Position: L240-K453).
Form	Liquid
Concentration	500 ug/ml
Purification	Immunogen affinity purified.
Suggested Dilutions	Western blot, 1:500-2000 Immunohistochemistry, 1:50-400 Immunoprecipitation, 1:50 Flow Cytometry (Fixed), 1-3ug/1x10 <sup>6</sup> cells

	ELISA, 1:100-1000
--	-------------------

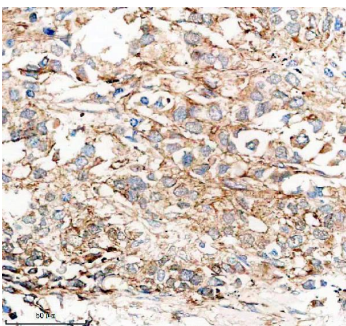
## Anti-Cytokeratin 15/KRT15 Antibody (A06791-4) Images



Western blot analysis of Cytokeratin 15/KRT15 using anti-Cytokeratin 15/KRT15 antibody (A06791-4). Electrophoresis was performed on a 10% SDS-PAGE gel at 80V (Stacking gel) / 120V (Resolving gel) for 2 hours. The sample well of each lane was loaded with 30 ug of sample under reducing conditions. Lane 1: human Hela whole cell lysates, Lane 2: human A431 whole cell lysates, Lane 3: human PC-3 whole cell lysates. After electrophoresis, proteins were transferred to a nitrocellulose membrane at 150 mA for 50-90 minutes. Blocked the membrane with 5% non-fat milk/TBS for 1.5 hour at RT. The membrane was incubated with rabbit anti-Cytokeratin 15/KRT15 antigen affinity purified polyclonal antibody (A06791-4) at 1:1000 overnight at 4°C, then washed with TBS-0.1% Tween 3 times with 5 minutes each and probed with a goat anti-rabbit IgG-HRP secondary antibody at a dilution of 1:5000 for 1.5 hour at RT. The signal is developed using an ECL Plus Western Blotting Substrate (Catalog # AR1196-200) with Tanon 5200 system. A specific band was detected for Cytokeratin 15/KRT15 at approximately 49 kDa. The expected band size for Cytokeratin 15/KRT15 is at 49 kDa.

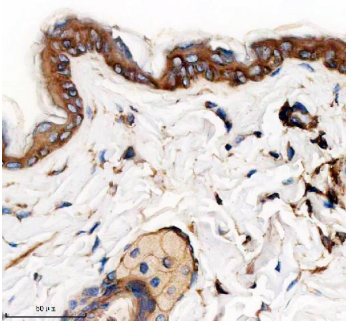


IHC analysis of Cytokeratin 15/KRT15 using anti-Cytokeratin 15/KRT15 antibody (A06791-4). Cytokeratin 15/KRT15 was detected in a paraffin-embedded section of human cervical cancer tissue. Heat mediated antigen retrieval was performed in EDTA buffer (pH 8.0, epitope retrieval solution). The tissue section was blocked with 10% goat serum. The tissue section was then incubated with 1:200 rabbit anti-Cytokeratin 15/KRT15 Antibody (A06791-4) overnight at 4°C. Peroxidase Conjugated Goat Anti-rabbit IgG was used as secondary antibody and incubated for 30 minutes at 37°C. The tissue section was developed using HRP Conjugated Rabbit IgG Super Vision Assay Kit (Catalog # SV0002) with DAB as the chromogen.

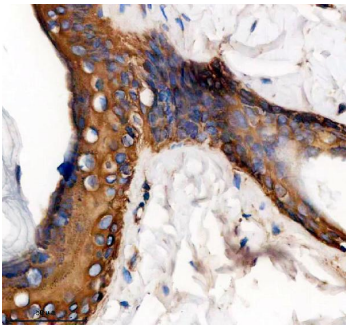


IHC analysis of Cytokeratin 15/KRT15 using anti-Cytokeratin 15/KRT15 antibody (A06791-4). Cytokeratin 15/KRT15 was detected in a paraffin-embedded section of human lung cancer tissue. Heat mediated antigen retrieval was performed in EDTA buffer (pH 8.0, epitope retrieval solution). The tissue section was blocked with 10% goat serum. The tissue section was then incubated with 1:200 rabbit anti-Cytokeratin 15/KRT15 Antibody (A06791-4) overnight at 4°C. Peroxidase Conjugated Goat Anti-rabbit IgG was used as secondary antibody and incubated for 30 minutes at 37°C. The tissue section was developed using HRP Conjugated Rabbit IgG Super Vision Assay Kit (Catalog # SV0002) with DAB as the chromogen.

IHC analysis of Cytokeratin 15/KRT15 using anti-Cytokeratin 15/KRT15 antibody (A06791-4). Cytokeratin 15/KRT15 was



detected in a paraffin-embedded section of mouse skin tissue. Heat mediated antigen retrieval was performed in EDTA buffer (pH 8.0, epitope retrieval solution). The tissue section was blocked with 10% goat serum. The tissue section was then incubated with 1:200 rabbit anti-Cytokeratin 15/KRT15 Antibody (A06791-4) overnight at 4°C. Peroxidase Conjugated Goat Anti-rabbit IgG was used as secondary antibody and incubated for 30 minutes at 37°C. The tissue section was developed using HRP Conjugated Rabbit IgG Super Vision Assay Kit (Catalog # SV0002) with DAB as the chromogen.



IHC analysis of Cytokeratin 15/KRT15 using anti-Cytokeratin 15/KRT15 antibody (A06791-4). Cytokeratin 15/KRT15 was detected in a paraffin-embedded section of rat skin tissue. Heat mediated antigen retrieval was performed in EDTA buffer (pH 8.0, epitope retrieval solution). The tissue section was blocked with 10% goat serum. The tissue section was then incubated with 1:200 rabbit anti-Cytokeratin 15/KRT15 Antibody (A06791-4) overnight at 4°C. Peroxidase Conjugated Goat Anti-rabbit IgG was used as secondary antibody and incubated for 30 minutes at 37°C. The tissue section was developed using HRP Conjugated Rabbit IgG Super Vision Assay Kit (Catalog # SV0002) with DAB as the chromogen.

## Submit a product review to Biocompare.com

Submit a review of this product to Biocompare.com to receive a \$20 Amazon.com giftcard! Your reviews help your fellow scientists make the right decisions. Thank you for your contribution.



### Anti-Cytokeratin 15/KRT15 Antibody

For Research Use Only. Not for use in diagnostic procedures.