

## Anti-RPL23A Antibody (C-term)

Catalog Number: A06803-1

### About RPL23A

Ribosomes, the organelles that catalyze protein synthesis, consist of a small 40S subunit and a large 60S subunit. Together these subunits are composed of 4 RNA species and approximately 80 structurally distinct proteins. RPL23A is a ribosomal protein that is a component of the 60S subunit. The protein belongs to the L23P family of ribosomal proteins. It is located in the cytoplasm. The protein may be one of the target molecules involved in mediating growth inhibition by interferon. In yeast, the corresponding protein binds to a specific site on the 26S rRNA. This gene is co-transcribed with the U42A, U42B, U101A, and U101B small nucleolar RNA genes, which are located in its third, first, second, and fourth introns, respectively.

### Overview

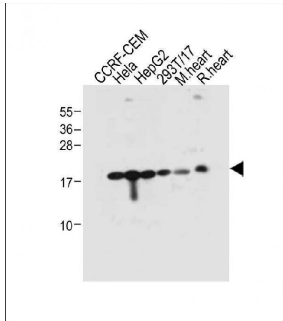
Product Name	Anti-RPL23A Antibody (C-term)
Reactive Species	Human, Mouse, Rat
Description	Boster Bio Anti-RPL23A Antibody (C-term) (Catalog # A06803-1). Tested in IHC-P, WB application(s). This antibody reacts with Human, Mouse, Rat.
Application	IHC-P, WB
Clonality	Polyclonal
Formulation	Purified polyclonal antibody supplied in PBS with 0.09% (W/V) sodium azide.
Storage Instructions	Maintain refrigerated at 2-8°C for up to 2 weeks. For long-term storage, store at -20°C in small aliquots to prevent freeze-thaw cycles.
Host	Rabbit
Uniprot ID	P62750

### Technical Details

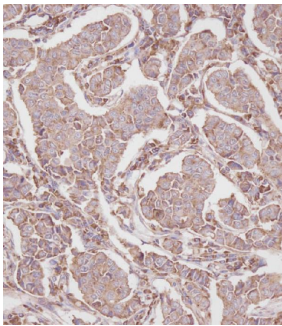
Immunogen	This RPL23A antibody is generated from rabbits immunized with a KLH conjugated synthetic peptide between 111-140 amino acids from the C-terminal region of human RPL23A.
Predicted Reactive Species	Bovine
Isotype	Rabbit IgG
Purification	This antibody is purified through a protein A column, followed by peptide affinity purification.
Suggested Dilutions	WB: 1:2000 IHC-P: 1:100



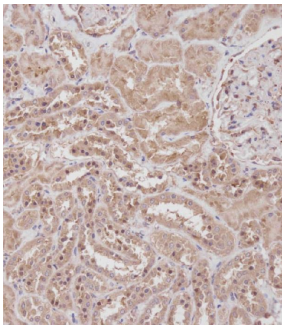
## Anti-RPL23A Antibody (C-term) (A06803-1) Images



All lanes : Anti-RPL23A Antibody (C-term) at 1:2000 dilution  
Lane 1: CCRF-CEM whole cell lysate  
Lane 2: HeLa whole cell lysate  
Lane 3: HepG2 whole cell lysate  
Lane 4: 293T/17 whole cell lysate  
Lane 5: Mouse heart tissue lysate  
Lane 6: Rat heart tissue lysate  
Lysates/proteins at 20 µg per lane. Secondary Goat Anti-Rabbit IgG, (H+L), Peroxidase conjugated at 1/10000 dilution. Predicted band size : 18 kDa  
Blocking/Dilution buffer: 5% NFD/MTBST.



Immunohistochemical analysis of RPL23A Antibody (C-term) on paraffin-embedded Human breast carcinoma tissue. Tissue was fixed with formaldehyde at room temperature. Heat induced epitope retrieval was performed by EDTA buffer (pH9. 0). Samples were incubated with primary antibody(1:100) for 1 hour at room temperature. Undiluted CRF Anti-Polyvalent HRP Polymer antibody was used as the secondary antibody.



Immunohistochemical analysis of A06803-1 on paraffin-embedded Human kidney tissue. Tissue was fixed with formaldehyde at room temperature. Heat induced epitope retrieval was performed by EDTA buffer (pH9. 0). Samples were incubated with primary antibody(1:100) for 1 hour at room temperature. Undiluted CRF Anti-Polyvalent HRP Polymer antibody was used as the secondary antibody.

### Submit a product review to Biocompare.com

Submit a review of this product to Biocompare.com to receive a \$20 Amazon.com giftcard! Your reviews help your fellow scientists make the right decisions. Thank you for your contribution.



Anti-RPL23A Antibody (C-term)

For Research Use Only. Not for use in diagnostic procedures.