

## Anti-PACS1 Antibody

Catalog Number: A06811-1

### About PACS1

The phosphofurin acidic cluster sorting protein 1 (PACS1), belongs to the PACS family of cytosolic connector proteins that localize different membrane proteins to the trans-Golgi network (TGN) (1,2). Mutations in PACS1 cause defects in cranial-neural crest migration during early development, leading to a recognizable intellectual disability syndrome (3). PACS1, along with the related protein PACS2, also plays a role in HIV-1 Nef-mediated downregulation of cell surface MHC-I molecules to the TGN, thereby enabling HIV-1 to escape immune surveillance (4).

### Overview

Product Name	Anti-PACS1 Antibody
Reactive Species	Human, Mouse, Rat
Description	Boster Bio Anti-PACS1 Antibody (Catalog # A06811-1). Tested in ELISA, WB, IHC-P, IF applications. This antibody reacts with Human, Mouse, Rat.
Application	ELISA, IF, IHC-P, WB
Clonality	Polyclonal
Formulation	PACS1 antibody is supplied in PBS containing 0.02% sodium azide.
Storage Instructions	PACS1 antibody can be stored at 4°C for three months and -20°C, stable for up to one year.
Host	Rabbit
Uniprot ID	Q6VY07

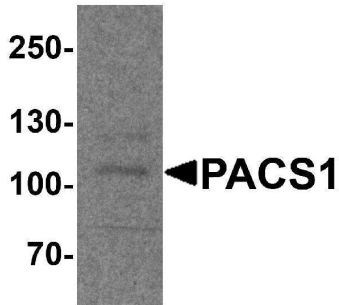
### Technical Details

Immunogen	PACS1 antibody was raised against a 17 amino acid peptide near the center of human PACS1. The immunogen is located within amino acids 430 - 480 of PACS1.
Predicted Reactive Species	Mouse, Rat
Cross Reactivity	PACS1 antibody is human, mouse and rat reactive. Multiple isoforms of PACS1 are known to exist. PACS1 antibody is predicted to not cross-react with PACS2.
Isotype	IgG
Form	Liquid
Concentration	1 mg/mL
Purification	PACS1 antibody is affinity chromatography purified via peptide column.
Suggested Dilutions	PACS1 antibody can be used for detection of PACS1 by Western blot at 1 - 2 ug/ml. Antibody can

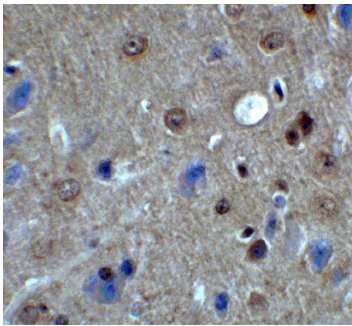
also be used for immunohistochemistry starting at 2 ug/mL For immunofluorescence start at 20 ug/mL.

Antibody validated: Western Blot in rat samples; Immunohistochemistry in mouse samples and Immunofluorescence in human and mouse samples. All other applications and species not yet tested. Optimal dilutions for each application should be determined by the researcher.

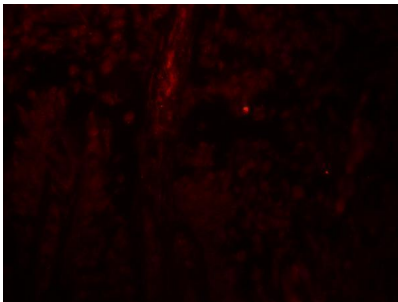
## Anti-PACS1 Antibody (A06811-1) Images



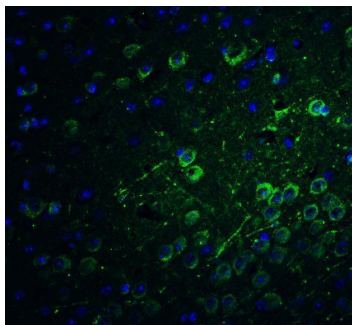
Western blot analysis of PACS1 in rat bladder tissue lysate with PACS1 antibody at 1 ug/ml.



Immunohistochemistry of PACS1 in mouse brain tissue with PACS1 antibody at 2 ug/ml.



Immunofluorescence of PACS1 in human bladder tissue with PACS1 antibody at 20 ug/mL.



Immunofluorescence of PACS1 in mouse brain tissue with PACS1 antibody at 20 ug/ml. Green: PACS1 Antibody (A06811-1) Blue: DAPI staining

Submit a product review to [Biocompare.com](https://www.biocompare.com)

Submit a review of this product to [Biocompare.com](https://www.biocompare.com) to receive a \$20 Amazon.com giftcard! Your reviews help your fellow scientists make the right decisions. Thank you for your contribution.



Anti-PACS1 Antibody

For Research Use Only. Not for use in diagnostic procedures.