

Anti-GAS1 Antibody

Catalog Number: A06815-1

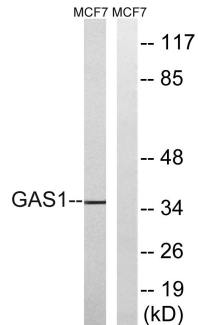
Overview

Product Name	Anti-GAS1 Antibody
Reactive Species	Human, Mouse
Description	Boster Bio Anti-GAS1 Antibody (Catalog# A06815-1). Tested in WB, ELISA applications. This antibody reacts with Human, Mouse.
Application	ELISA, WB
Clonality	Polyclonal
Formulation	PBS containing 50% glycerol, 0.5% stabilizing protein and 0.02% sodium azide. This antibody is supplied in a stabilized formulation. Compatibility with conjugation reactions depends on the chemistry of the conjugation method used. For conjugation methods that are not compatible with the stabilizing components present in this formulation, a carrier-free antibody format is required.
Storage Instructions	Store at -20°C for one year. For short-term storage and frequent use, store at 4°C for up to one month. Avoid repeated freeze-thaw cycles.
Host	Rabbit
Uniprot ID	P54826

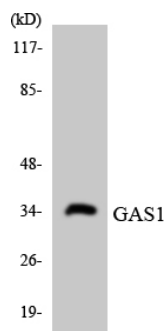
Technical Details

Immunogen	A peptide derived from human GAS1. Immunogen sequence location: 241-290
Isotype	Rabbit IgG
Form	Liquid
Concentration	0.5-1mg/ml, actual concentration vary by lot. Use suggested dilution ratio to decide dilution procedure.
Purification	The antibody was purified from rabbit antiserum by affinity-chromatography using immunogen.
Suggested Dilutions	WB 1:500 - 1:2000. ELISA: 1:40000. Not yet tested in other applications.

Anti-GAS1 Antibody (A06815-1) Images



Western blot analysis of lysates from MCF-7 cells, using GAS1 Antibody. The lane on the right is blocked with the synthesized peptide.



Western blot analysis of the lysates from HeLa cells using GAS1 antibody.

1 Publications Citing This Product

1. PubMed ID: 25017753, Differentiations of 5-HT and GAS cells in the digestive canals of *Rana chensinensis* tadpoles

Visit bosterbio.com/anti-gas1-antibody-a06815-1-boster.html to see all 1 publications.

Submit a product review to Biocompare.com

Submit a review of this product to Biocompare.com to receive a \$20 Amazon.com giftcard! Your reviews help your fellow scientists make the right decisions. Thank you for your contribution.



Anti-GAS1 Antibody

For Research Use Only. Not for use in diagnostic procedures.